

# TRUMPET DIATONICS

*a poetic training in Music Literacy*

## Book of Flow



JC HEISLER

Copyright © 2020 by John-Curtis J. Heisler

All rights reserved. No part of this publication may be reproduced, distributed, or transmitted in any form or by any means, including photocopying, recording, or other electronic or mechanical methods, without the prior written permission of the publisher, except in the case of brief quotations embodied in critical reviews and certain other noncommercial uses permitted by copyright law. For permission requests, write to the publisher, addressed “Attention: Permissions Coordinator,” at the address below.

[www.trumpetdiatonics/contact.com](http://www.trumpetdiatonics/contact.com)



**Book of Flow**  
Trumpet Diatonics ©

By JC Heisler

During Rests:  
- Inhale for a natural, free release.  
- Remove and replace mouthpiece,  
in coordination with aperture  
formation, at the release of the air.

# Trumpet Diatonics

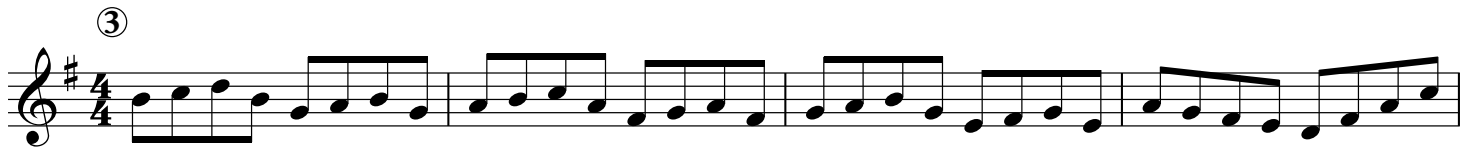
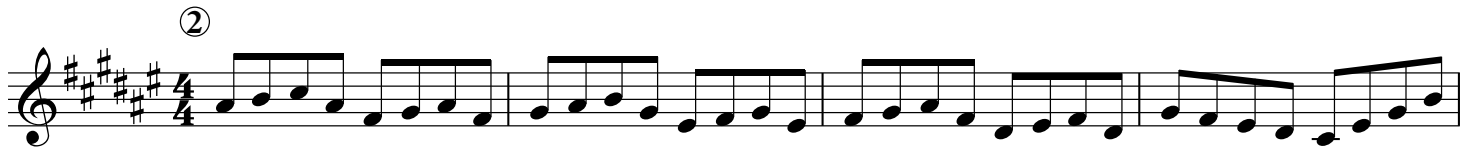
## Pattern #1

Vary meter, tempo, and dynamics.

Play All Tonalties: Minors, Chromatic, Whole Tone, Diminished, Augmented

Play as high as is easy, then continue to #14.

JC Heisler



⑤

Exercise 5 consists of two staves of music in G major (one sharp) and 4/4 time. The first staff contains four measures of eighth-note patterns: G4-A4-B4-C5, G4-A4-B4-C5, G4-A4-B4-C5, and G4-A4-B4-C5. The second staff contains four measures: G4-A4-B4-C5, G4-A4-B4-C5, G4-A4-B4-C5, and G4-A4-B4-C5, ending with a double bar line.

⑥

Exercise 6 consists of two staves of music in F major (no sharps or flats) and 4/4 time. The first staff contains four measures of eighth-note patterns: F4-G4-A4-B4, F4-G4-A4-B4, F4-G4-A4-B4, and F4-G4-A4-B4. The second staff contains four measures: F4-G4-A4-B4, F4-G4-A4-B4, F4-G4-A4-B4, and F4-G4-A4-B4, ending with a double bar line.

⑦

Exercise 7 consists of two staves of music in D major (two sharps) and 4/4 time. The first staff contains four measures of eighth-note patterns: D4-E4-F#4-G4, D4-E4-F#4-G4, D4-E4-F#4-G4, and D4-E4-F#4-G4. The second staff contains four measures: D4-E4-F#4-G4, D4-E4-F#4-G4, D4-E4-F#4-G4, and D4-E4-F#4-G4, ending with a double bar line.

⑧

Exercise 8 consists of two staves of music in C major (no sharps or flats) and 4/4 time. The first staff contains four measures of eighth-note patterns: C4-D4-E4-F4, C4-D4-E4-F4, C4-D4-E4-F4, and C4-D4-E4-F4. The second staff contains four measures: C4-D4-E4-F4, C4-D4-E4-F4, C4-D4-E4-F4, and C4-D4-E4-F4, ending with a double bar line.

⑨

Exercise 9 consists of two staves of music in B-flat major (two flats) and 4/4 time. The first staff contains four measures of eighth-note patterns: Bb4-C4-D4-Eb4, Bb4-C4-D4-Eb4, Bb4-C4-D4-Eb4, and Bb4-C4-D4-Eb4. The second staff contains four measures: Bb4-C4-D4-Eb4, Bb4-C4-D4-Eb4, Bb4-C4-D4-Eb4, and Bb4-C4-D4-Eb4, ending with a double bar line.



15

Exercise 15: Two staves of music in 4/4 time, key signature of two flats (Bb, Eb). The melody consists of eighth and quarter notes.

16

Exercise 16: Two staves of music in 4/4 time, key signature of two sharps (F#, C#). The melody consists of eighth and quarter notes.

17

Exercise 17: Two staves of music in 4/4 time, key signature of three flats (Bbb, Ebb, Ab). The melody consists of eighth and quarter notes.

18

Exercise 18: Two staves of music in 4/4 time, key signature of one flat (Bb). The melody consists of eighth and quarter notes.

19

Exercise 19: Two staves of music in 4/4 time, key signature of three sharps (F#, C#, G#). The melody consists of eighth and quarter notes.





⑤

Exercise 5 consists of two staves of music in G major (one sharp) and 4/4 time. The first staff begins with a treble clef, a key signature of one sharp (F#), and a 4/4 time signature. The melody is composed of eighth notes, starting on G4 and moving in a stepwise fashion through the scale. The second staff continues the melody, ending with a double bar line.

⑥

Exercise 6 consists of two staves of music in F major (no sharps or flats) and 4/4 time. The first staff begins with a treble clef, a key signature of no sharps or flats, and a 4/4 time signature. The melody is composed of eighth notes, starting on F4 and moving in a stepwise fashion through the scale. The second staff continues the melody, ending with a double bar line.

⑦

Exercise 7 consists of two staves of music in A major (two sharps) and 4/4 time. The first staff begins with a treble clef, a key signature of two sharps (F# and C#), and a 4/4 time signature. The melody is composed of eighth notes, starting on A4 and moving in a stepwise fashion through the scale. The second staff continues the melody, ending with a double bar line.

⑧

Exercise 8 consists of two staves of music in D major (two sharps) and 4/4 time. The first staff begins with a treble clef, a key signature of two sharps (F# and C#), and a 4/4 time signature. The melody is composed of eighth notes, starting on D4 and moving in a stepwise fashion through the scale. The second staff continues the melody, ending with a double bar line.

⑨

Exercise 9 consists of two staves of music in B minor (two sharps) and 4/4 time. The first staff begins with a treble clef, a key signature of two sharps (F# and C#), and a 4/4 time signature. The melody is composed of eighth notes, starting on B4 and moving in a stepwise fashion through the scale. The second staff continues the melody, ending with a double bar line.

10

Exercise 10 consists of two staves of music in G major (one sharp) and 4/4 time. The first staff begins with a treble clef and a key signature of one sharp (F#). The melody is composed of eighth and quarter notes, starting on G4 and ending on G5. The second staff continues the melody, ending with a double bar line.

11

Exercise 11 consists of two staves of music in B-flat major (two flats) and 4/4 time. The first staff begins with a treble clef and a key signature of two flats (Bb, Eb). The melody is composed of eighth and quarter notes, starting on Bb4 and ending on Bb5. The second staff continues the melody, ending with a double bar line.

12

Exercise 12 consists of two staves of music in D major (two sharps) and 4/4 time. The first staff begins with a treble clef and a key signature of two sharps (F#, C#). The melody is composed of eighth and quarter notes, starting on D4 and ending on D5. The second staff continues the melody, ending with a double bar line.

13

Exercise 13 consists of two staves of music in B-flat major (two flats) and 4/4 time. The first staff begins with a treble clef and a key signature of two flats (Bb, Eb). The melody is composed of eighth and quarter notes, starting on Bb4 and ending on Bb5. The second staff continues the melody, ending with a double bar line.

14

Exercise 14 consists of two staves of music in D major (two sharps) and 4/4 time. The first staff begins with a treble clef and a key signature of two sharps (F#, C#). The melody is composed of eighth and quarter notes, starting on D4 and ending on D5. The second staff continues the melody, ending with a double bar line.





⑤

Exercise 5: Two staves of music in G major (one sharp) and 4/4 time. The first staff contains four measures of eighth-note patterns, and the second staff contains four measures of eighth-note patterns, ending with a double bar line.

⑥

Exercise 6: Two staves of music in B minor (two flats) and 4/4 time. The first staff contains four measures of eighth-note patterns, and the second staff contains four measures of eighth-note patterns, ending with a double bar line.

⑦

Exercise 7: Two staves of music in D major (two sharps) and 4/4 time. The first staff contains four measures of eighth-note patterns, and the second staff contains four measures of eighth-note patterns, ending with a double bar line.

⑧

Exercise 8: Two staves of music in C major (no sharps or flats) and 4/4 time. The first staff contains four measures of eighth-note patterns, and the second staff contains four measures of eighth-note patterns, ending with a double bar line.

⑨

Exercise 9: Two staves of music in E minor (three flats) and 4/4 time. The first staff contains four measures of eighth-note patterns, and the second staff contains four measures of eighth-note patterns, ending with a double bar line.

10

11

12

13

14

15

Exercise 15 consists of two staves of music. The first staff begins with a treble clef, a 4/4 time signature, and a key signature of two flats (B-flat and E-flat). The melody is a continuous eighth-note pattern: G4, A4, B-flat4, C5, D5, E-flat5, F5, G5, A5, B-flat5, C6, D6, E-flat6, F6, G6, A6, B-flat6, C7, D7, E-flat7, F7, G7, A7, B-flat7, C8, D8, E-flat8, F8, G8, A8, B-flat8, C9, D9, E-flat9, F9, G9, A9, B-flat9, C10, D10, E-flat10, F10, G10, A10, B-flat10, C11, D11, E-flat11, F11, G11, A11, B-flat11, C12, D12, E-flat12, F12, G12, A12, B-flat12, C13, D13, E-flat13, F13, G13, A13, B-flat13, C14, D14, E-flat14, F14, G14, A14, B-flat14, C15, D15, E-flat15, F15, G15, A15, B-flat15, C16, D16, E-flat16, F16, G16, A16, B-flat16, C17, D17, E-flat17, F17, G17, A17, B-flat17, C18, D18, E-flat18, F18, G18, A18, B-flat18, C19, D19, E-flat19, F19, G19, A19, B-flat19, C20, D20, E-flat20, F20, G20, A20, B-flat20, C21, D21, E-flat21, F21, G21, A21, B-flat21, C22, D22, E-flat22, F22, G22, A22, B-flat22, C23, D23, E-flat23, F23, G23, A23, B-flat23, C24, D24, E-flat24, F24, G24, A24, B-flat24, C25, D25, E-flat25, F25, G25, A25, B-flat25, C26, D26, E-flat26, F26, G26, A26, B-flat26, C27, D27, E-flat27, F27, G27, A27, B-flat27, C28, D28, E-flat28, F28, G28, A28, B-flat28, C29, D29, E-flat29, F29, G29, A29, B-flat29, C30, D30, E-flat30, F30, G30, A30, B-flat30, C31, D31, E-flat31, F31, G31, A31, B-flat31, C32, D32, E-flat32, F32, G32, A32, B-flat32, C33, D33, E-flat33, F33, G33, A33, B-flat33, C34, D34, E-flat34, F34, G34, A34, B-flat34, C35, D35, E-flat35, F35, G35, A35, B-flat35, C36, D36, E-flat36, F36, G36, A36, B-flat36, C37, D37, E-flat37, F37, G37, A37, B-flat37, C38, D38, E-flat38, F38, G38, A38, B-flat38, C39, D39, E-flat39, F39, G39, A39, B-flat39, C40, D40, E-flat40, F40, G40, A40, B-flat40, C41, D41, E-flat41, F41, G41, A41, B-flat41, C42, D42, E-flat42, F42, G42, A42, B-flat42, C43, D43, E-flat43, F43, G43, A43, B-flat43, C44, D44, E-flat44, F44, G44, A44, B-flat44, C45, D45, E-flat45, F45, G45, A45, B-flat45, C46, D46, E-flat46, F46, G46, A46, B-flat46, C47, D47, E-flat47, F47, G47, A47, B-flat47, C48, D48, E-flat48, F48, G48, A48, B-flat48, C49, D49, E-flat49, F49, G49, A49, B-flat49, C50, D50, E-flat50, F50, G50, A50, B-flat50, C51, D51, E-flat51, F51, G51, A51, B-flat51, C52, D52, E-flat52, F52, G52, A52, B-flat52, C53, D53, E-flat53, F53, G53, A53, B-flat53, C54, D54, E-flat54, F54, G54, A54, B-flat54, C55, D55, E-flat55, F55, G55, A55, B-flat55, C56, D56, E-flat56, F56, G56, A56, B-flat56, C57, D57, E-flat57, F57, G57, A57, B-flat57, C58, D58, E-flat58, F58, G58, A58, B-flat58, C59, D59, E-flat59, F59, G59, A59, B-flat59, C60, D60, E-flat60, F60, G60, A60, B-flat60, C61, D61, E-flat61, F61, G61, A61, B-flat61, C62, D62, E-flat62, F62, G62, A62, B-flat62, C63, D63, E-flat63, F63, G63, A63, B-flat63, C64, D64, E-flat64, F64, G64, A64, B-flat64, C65, D65, E-flat65, F65, G65, A65, B-flat65, C66, D66, E-flat66, F66, G66, A66, B-flat66, C67, D67, E-flat67, F67, G67, A67, B-flat67, C68, D68, E-flat68, F68, G68, A68, B-flat68, C69, D69, E-flat69, F69, G69, A69, B-flat69, C70, D70, E-flat70, F70, G70, A70, B-flat70, C71, D71, E-flat71, F71, G71, A71, B-flat71, C72, D72, E-flat72, F72, G72, A72, B-flat72, C73, D73, E-flat73, F73, G73, A73, B-flat73, C74, D74, E-flat74, F74, G74, A74, B-flat74, C75, D75, E-flat75, F75, G75, A75, B-flat75, C76, D76, E-flat76, F76, G76, A76, B-flat76, C77, D77, E-flat77, F77, G77, A77, B-flat77, C78, D78, E-flat78, F78, G78, A78, B-flat78, C79, D79, E-flat79, F79, G79, A79, B-flat79, C80, D80, E-flat80, F80, G80, A80, B-flat80, C81, D81, E-flat81, F81, G81, A81, B-flat81, C82, D82, E-flat82, F82, G82, A82, B-flat82, C83, D83, E-flat83, F83, G83, A83, B-flat83, C84, D84, E-flat84, F84, G84, A84, B-flat84, C85, D85, E-flat85, F85, G85, A85, B-flat85, C86, D86, E-flat86, F86, G86, A86, B-flat86, C87, D87, E-flat87, F87, G87, A87, B-flat87, C88, D88, E-flat88, F88, G88, A88, B-flat88, C89, D89, E-flat89, F89, G89, A89, B-flat89, C90, D90, E-flat90, F90, G90, A90, B-flat90, C91, D91, E-flat91, F91, G91, A91, B-flat91, C92, D92, E-flat92, F92, G92, A92, B-flat92, C93, D93, E-flat93, F93, G93, A93, B-flat93, C94, D94, E-flat94, F94, G94, A94, B-flat94, C95, D95, E-flat95, F95, G95, A95, B-flat95, C96, D96, E-flat96, F96, G96, A96, B-flat96, C97, D97, E-flat97, F97, G97, A97, B-flat97, C98, D98, E-flat98, F98, G98, A98, B-flat98, C99, D99, E-flat99, F99, G99, A99, B-flat99, C100, D100, E-flat100, F100, G100, A100, B-flat100, C101, D101, E-flat101, F101, G101, A101, B-flat101, C102, D102, E-flat102, F102, G102, A102, B-flat102, C103, D103, E-flat103, F103, G103, A103, B-flat103, C104, D104, E-flat104, F104, G104, A104, B-flat104, C105, D105, E-flat105, F105, G105, A105, B-flat105, C106, D106, E-flat106, F106, G106, A106, B-flat106, C107, D107, E-flat107, F107, G107, A107, B-flat107, C108, D108, E-flat108, F108, G108, A108, B-flat108, C109, D109, E-flat109, F109, G109, A109, B-flat109, C110, D110, E-flat110, F110, G110, A110, B-flat110, C111, D111, E-flat111, F111, G111, A111, B-flat111, C112, D112, E-flat112, F112, G112, A112, B-flat112, C113, D113, E-flat113, F113, G113, A113, B-flat113, C114, D114, E-flat114, F114, G114, A114, B-flat114, C115, D115, E-flat115, F115, G115, A115, B-flat115, C116, D116, E-flat116, F116, G116, A116, B-flat116, C117, D117, E-flat117, F117, G117, A117, B-flat117, C118, D118, E-flat118, F118, G118, A118, B-flat118, C119, D119, E-flat119, F119, G119, A119, B-flat119, C120, D120, E-flat120, F120, G120, A120, B-flat120, C121, D121, E-flat121, F121, G121, A121, B-flat121, C122, D122, E-flat122, F122, G122, A122, B-flat122, C123, D123, E-flat123, F123, G123, A123, B-flat123, C124, D124, E-flat124, F124, G124, A124, B-flat124, C125, D125, E-flat125, F125, G125, A125, B-flat125, C126, D126, E-flat126, F126, G126, A126, B-flat126, C127, D127, E-flat127, F127, G127, A127, B-flat127, C128, D128, E-flat128, F128, G128, A128, B-flat128, C129, D129, E-flat129, F129, G129, A129, B-flat129, C130, D130, E-flat130, F130, G130, A130, B-flat130, C131, D131, E-flat131, F131, G131, A131, B-flat131, C132, D132, E-flat132, F132, G132, A132, B-flat132, C133, D133, E-flat133, F133, G133, A133, B-flat133, C134, D134, E-flat134, F134, G134, A134, B-flat134, C135, D135, E-flat135, F135, G135, A135, B-flat135, C136, D136, E-flat136, F136, G136, A136, B-flat136, C137, D137, E-flat137, F137, G137, A137, B-flat137, C138, D138, E-flat138, F138, G138, A138, B-flat138, C139, D139, E-flat139, F139, G139, A139, B-flat139, C140, D140, E-flat140, F140, G140, A140, B-flat140, C141, D141, E-flat141, F141, G141, A141, B-flat141, C142, D142, E-flat142, F142, G142, A142, B-flat142, C143, D143, E-flat143, F143, G143, A143, B-flat143, C144, D144, E-flat144, F144, G144, A144, B-flat144, C145, D145, E-flat145, F145, G145, A145, B-flat145, C146, D146, E-flat146, F146, G146, A146, B-flat146, C147, D147, E-flat147, F147, G147, A147, B-flat147, C148, D148, E-flat148, F148, G148, A148, B-flat148, C149, D149, E-flat149, F149, G149, A149, B-flat149, C150, D150, E-flat150, F150, G150, A150, B-flat150, C151, D151, E-flat151, F151, G151, A151, B-flat151, C152, D152, E-flat152, F152, G152, A152, B-flat152, C153, D153, E-flat153, F153, G153, A153, B-flat153, C154, D154, E-flat154, F154, G154, A154, B-flat154, C155, D155, E-flat155, F155, G155, A155, B-flat155, C156, D156, E-flat156, F156, G156, A156, B-flat156, C157, D157, E-flat157, F157, G157, A157, B-flat157, C158, D158, E-flat158, F158, G158, A158, B-flat158, C159, D159, E-flat159, F159, G159, A159, B-flat159, C160, D160, E-flat160, F160, G160, A160, B-flat160, C161, D161, E-flat161, F161, G161, A161, B-flat161, C162, D162, E-flat162, F162, G162, A162, B-flat162, C163, D163, E-flat163, F163, G163, A163, B-flat163, C164, D164, E-flat164, F164, G164, A164, B-flat164, C165, D165, E-flat165, F165, G165, A165, B-flat165, C166, D166, E-flat166, F166, G166, A166, B-flat166, C167, D167, E-flat167, F167, G167, A167, B-flat167, C168, D168, E-flat168, F168, G168, A168, B-flat168, C169, D169, E-flat169, F169, G169, A169, B-flat169, C170, D170, E-flat170, F170, G170, A170, B-flat170, C171, D171, E-flat171, F171, G171, A171, B-flat171, C172, D172, E-flat172, F172, G172, A172, B-flat172, C173, D173, E-flat173, F173, G173, A173, B-flat173, C174, D174, E-flat174, F174, G174, A174, B-flat174, C175, D175, E-flat175, F175, G175, A175, B-flat175, C176, D176, E-flat176, F176, G176, A176, B-flat176, C177, D177, E-flat177, F177, G177, A177, B-flat177, C178, D178, E-flat178, F178, G178, A178, B-flat178, C179, D179, E-flat179, F179, G179, A179, B-flat179, C180, D180, E-flat180, F180, G180, A180, B-flat180, C181, D181, E-flat181, F181, G181, A181, B-flat181, C182, D182, E-flat182, F182, G182, A182, B-flat182, C183, D183, E-flat183, F183, G183, A183, B-flat183, C184, D184, E-flat184, F184, G184, A184, B-flat184, C185, D185, E-flat185, F185, G185, A185, B-flat185, C186, D186, E-flat186, F186, G186, A186, B-flat186, C187, D187, E-flat187, F187, G187, A187, B-flat187, C188, D188, E-flat188, F188, G188, A188, B-flat188, C189, D189, E-flat189, F189, G189, A189, B-flat189, C190, D190, E-flat190, F190, G190, A190, B-flat190, C191, D191, E-flat191, F191, G191, A191, B-flat191, C192, D192, E-flat192, F192, G192, A192, B-flat192, C193, D193, E-flat193, F193, G193, A193, B-flat193, C194, D194, E-flat194, F194, G194, A194, B-flat194, C195, D195, E-flat195, F195, G195, A195, B-flat195, C196, D196, E-flat196, F196, G196, A196, B-flat196, C197, D197, E-flat197, F197, G197, A197, B-flat197, C198, D198, E-flat198, F198, G198, A198, B-flat198, C199, D199, E-flat199, F199, G199, A199, B-flat199, C200, D200, E-flat200, F200, G200, A200, B-flat200, C201, D201, E-flat201, F201, G201, A201, B-flat201, C202, D202, E-flat202, F202, G202, A202, B-flat202, C203, D203, E-flat203, F203, G203, A203, B-flat203, C204, D204, E-flat204, F204, G204, A204, B-flat204, C205, D205, E-flat205, F205, G205, A205, B-flat205, C206, D206, E-flat206, F206, G206, A206, B-flat206, C207, D207, E-flat207, F207, G207, A207, B-flat207, C208, D208, E-flat208, F208, G208, A208, B-flat208, C209, D209, E-flat209, F209, G209, A209, B-flat209, C210, D210, E-flat210, F210, G210, A210, B-flat210, C211, D211, E-flat211, F211, G211, A211, B-flat211, C212, D212, E-flat212, F212, G212, A212, B-flat212, C213, D213, E-flat213, F213, G213, A213, B-flat213, C214, D214, E-flat214, F214, G214, A214, B-flat214, C215, D215, E-flat215, F215, G215, A215, B-flat215, C216, D216, E-flat216, F216, G216, A216, B-flat216, C217, D217, E-flat217, F217, G217, A217, B-flat217, C218, D218, E-flat218, F218, G218, A218, B-flat218, C219, D219, E-flat219, F219, G219, A219, B-flat219, C220, D220, E-flat220, F220, G220, A220, B-flat220, C221, D221, E-flat221, F221, G221, A221, B-flat221, C222, D222, E-flat222, F222, G222, A222, B-flat222, C223, D223, E-flat223, F223, G223, A223, B-flat223, C224, D224, E-flat224, F224, G224, A224, B-flat224, C225, D225, E-flat225, F225, G225, A225, B-flat225, C226, D226, E-flat226, F226, G226, A226, B-flat226, C227, D227, E-flat227, F227, G227, A227, B-flat227, C228, D228, E-flat228, F228, G228, A228, B-flat228, C229, D229, E-flat229, F229, G229, A229, B-flat229, C230, D230, E-flat230, F230, G230, A230, B-flat230, C231, D231, E-flat231, F231, G231, A231, B-flat231, C232, D232, E-flat232, F232, G232, A232, B-flat232, C233, D233, E-flat233, F233, G233, A233, B-flat233, C234, D234, E-flat234, F234, G234, A234, B-flat234, C235, D235, E-flat235, F235, G235, A235, B-flat235, C236, D236, E-flat236, F236, G236, A236, B-flat236, C237, D237, E-flat237, F237, G237, A237, B-flat237, C238, D238, E-flat238, F238, G238, A238, B-flat238, C239, D239, E-flat239, F239, G239, A239, B-flat239, C240, D240, E-flat240, F240, G240, A240, B-flat240, C241, D241, E-flat241, F241, G241, A241, B-flat241, C242, D242, E-flat242, F242, G242, A242, B-flat242, C243, D243, E-flat243, F243, G243, A243, B-flat243, C244, D244, E-flat244, F244, G244, A244, B-flat244, C245, D245, E-flat245, F245, G245, A245, B-flat245, C246, D246, E-flat246, F246, G246, A246, B-flat246, C247, D247, E-flat247, F247, G247, A247, B-flat247, C248, D248, E-flat248, F248, G248, A248, B-flat248, C249, D249, E-flat249, F249, G249, A249, B-flat249, C250, D250, E-flat250, F250, G250, A250, B-flat250, C251, D251, E-flat251, F251, G251, A251, B-flat251, C252, D252, E-flat252, F252, G252, A252, B-flat252, C253, D253, E-flat253, F253, G253, A253, B-flat253, C254, D254, E-flat254, F254, G254, A254, B-flat254, C255, D255, E-flat255, F255, G255, A255, B-flat255, C256, D256, E-flat256, F256, G256, A256, B-flat256, C257, D257, E-flat257, F257, G257, A257, B-flat257, C258, D258, E-flat258, F258, G258, A258, B-flat258, C259, D259, E-flat259, F259, G259, A259, B-flat259, C260, D260, E-flat260, F260, G260, A260, B-flat260, C261, D261, E-flat261, F261, G261, A261, B-flat261, C262, D262, E-flat262, F262, G262, A262, B-flat262, C263, D263, E-flat263, F263, G263, A263, B-flat263, C264, D264, E-flat264, F264, G264, A264, B-flat264, C265, D265, E-flat265, F265, G265, A265, B-flat265, C266, D266, E-flat266, F266, G266, A266, B-flat266, C267, D267, E-flat267, F267, G267, A267, B-flat267, C268, D268, E-flat268, F268, G268, A268, B-flat268, C269, D269, E-flat269, F269, G269, A269, B-flat269, C270, D270, E-flat270, F270, G270, A270, B-flat270, C271, D271, E-flat271, F271, G271, A271, B-flat271, C272, D272, E-flat272, F272, G272, A272, B-flat272, C273, D273, E-flat273, F273, G273, A273, B-flat273, C274, D274, E-flat274, F274, G274, A274, B-flat274, C275, D275, E-flat275, F275, G275, A275, B-flat275, C276, D276, E-flat276, F276, G276, A276, B-flat276, C277, D277, E-flat277, F277, G277, A277, B-flat277, C278, D278, E-flat278, F278, G278, A278, B-flat278, C279, D279, E-flat279, F279, G279, A279, B-flat279, C280, D280, E-flat280, F280, G280, A280, B-flat280, C281, D281, E-flat281, F281, G281, A281, B-flat281, C282, D282, E-flat282, F282, G282, A282, B-flat282, C283, D283, E-flat283, F283, G283, A283, B-flat283, C284, D284, E-flat284, F284, G284, A284, B-flat284, C285, D285, E-flat285, F285, G285, A285, B-flat285, C286, D286, E-flat286, F286, G286, A286, B-flat286, C287, D287, E-flat287, F287, G287, A287, B-flat287, C288, D288, E-flat288, F288, G288, A288, B-flat288, C289, D289, E-flat289, F289, G289, A289, B-flat289, C290, D290, E-flat290, F290, G290, A290, B-flat290, C291, D291, E-flat291, F291, G291, A291, B-flat291, C292, D292, E-flat292, F292, G292, A292, B-flat292, C293, D293, E-flat293, F293, G293, A293, B-flat293, C294, D294, E-flat294, F294, G294, A294, B-flat294, C295, D295, E-flat295, F295, G295, A295, B-flat295, C296, D296, E-flat296, F296, G296, A296, B-flat296, C297, D297, E-flat297, F297, G297, A297, B-flat297, C298, D298, E-flat298, F298, G298, A298, B-flat298, C299, D299, E-flat299, F299, G299, A299, B-flat299, C300, D300, E-flat300, F300, G300, A300, B-flat300, C301, D301, E-flat301, F301, G301, A301, B-flat301, C302, D302, E-flat302, F302, G302, A302, B-flat302, C303, D303, E-flat303, F303, G303, A303, B-flat303, C304, D304, E-flat304, F304, G304, A304, B-flat304, C305, D305, E-flat305, F305, G305, A305, B-flat305, C306, D306, E-flat306, F306, G306, A306, B-flat306, C307, D307, E-flat307, F307, G307, A307, B-flat307, C308, D308, E-flat308, F308, G308, A308, B-flat308, C309, D309, E-flat309, F309, G309, A309, B-flat309, C310, D310, E-flat310, F310, G310, A310, B-flat310, C311, D311, E-flat311, F311, G311, A311, B-flat311, C312, D312, E-flat312, F312, G312, A312, B-flat312, C313, D313, E-flat313, F313, G313, A313, B-flat313, C314, D314, E-flat314, F314, G314, A314, B-flat314, C315, D315, E-flat315, F315, G315, A315, B-flat315, C316, D316, E-flat316, F316, G316, A316, B-flat316, C317, D317, E-flat317, F317, G317, A317, B-flat317, C318, D318, E-flat318, F318, G318, A318, B-flat318, C319, D319, E-flat319, F319, G319, A319, B-flat319, C320, D320, E-flat320, F320, G320, A320, B-flat320, C321, D321, E-flat321, F321, G321, A321, B-flat321, C322, D322, E-flat322, F322, G322, A322, B-flat322, C323, D323, E-flat323, F323, G323, A323, B-flat323, C324, D324, E-flat324, F324, G324, A324, B-flat324, C325, D325, E-flat325, F325, G325, A325, B-flat325, C326, D326, E-flat326, F326, G326, A326, B-flat326, C327, D327, E-flat327, F327, G327, A327, B-flat327, C328, D328, E-flat328, F328, G328, A328, B-flat328, C329, D329, E-flat329, F329, G329, A329, B-flat329, C330, D330, E-flat330, F330, G330, A330, B-flat330, C331, D331, E-flat331, F331, G331, A331, B-flat331, C332, D332, E-flat332, F332, G332, A332, B-flat332, C333, D333, E-flat333, F333, G333, A333, B-flat333, C334, D334, E-flat334, F334, G334, A334, B-flat334, C335, D335, E-flat335, F335, G335, A335, B-flat335, C336, D336, E-flat336, F336, G336, A336, B-flat336, C337, D337, E-flat337, F337, G337, A337, B-flat337, C338, D338, E-flat338, F338, G338, A338, B-flat338, C339, D339, E-flat339, F339, G339, A339, B-flat339, C340, D340, E-flat340, F340, G340, A340, B-flat340, C341, D341, E-flat341, F341, G341, A341, B-flat341, C342, D342, E-flat342, F342, G342, A342, B-flat342, C343, D343, E-flat343, F343, G343, A343, B-flat343, C344, D344, E-flat344, F344, G344, A344, B-flat344, C345, D345, E-flat345, F345, G345, A345, B-flat345, C346, D346, E-flat346, F346, G346, A346, B-flat346, C347, D347, E-flat347, F347, G347, A347, B-flat347, C348, D348, E-flat348, F348, G348, A348, B-flat348, C349, D349, E-flat349, F349, G349, A349, B-flat349, C350, D350, E-flat350, F350, G350, A350, B-flat350, C351, D351, E-flat351, F351, G351, A351, B-flat351, C352, D352, E-flat352, F352, G352,



During Rests:

- Inhale for a natural, free release.
- Remove and replace mouthpiece, in coordination with aperture formation, at the release of the air.

The Brass School [www.jcheisler.com](http://www.jcheisler.com)

# Trumpet Diatonics

## Pattern #4

Vary meter, tempo, and dynamics.

Play All Tonalties: Minors, Chromatic, Whole Tone, Diminished, Augmented  
Play as high as is easy, then continue to #14.

JC Heisler

①



②



③



④



⑤

Exercise 5, measures 1-4. The first staff contains measures 1-4. The second staff contains measures 5-8, with a repeat sign at the end of measure 8.

⑥

Exercise 6, measures 1-4. The first staff contains measures 1-4. The second staff contains measures 5-8, with a repeat sign at the end of measure 8.

⑦

Exercise 7, measures 1-4. The first staff contains measures 1-4. The second staff contains measures 5-8, with a repeat sign at the end of measure 8.

⑧

Exercise 8, measures 1-4. The first staff contains measures 1-4. The second staff contains measures 5-8, with a repeat sign at the end of measure 8.

⑨

Exercise 9, measures 1-4. The first staff contains measures 1-4. The second staff contains measures 5-8, with a repeat sign at the end of measure 8.

10

Exercise 10, first staff: Treble clef, key signature of one sharp (F#), 4/4 time signature. The staff contains a sequence of eighth notes and quarter notes, including some beamed eighth notes and quarter rests.

11

Exercise 11, first staff: Treble clef, key signature of two flats (Bb, Eb), 4/4 time signature. The staff contains a sequence of eighth notes and quarter notes, including some beamed eighth notes and quarter rests.

12

Exercise 12, first staff: Treble clef, key signature of three sharps (F#, C#, G#), 4/4 time signature. The staff contains a sequence of eighth notes and quarter notes, including some beamed eighth notes and quarter rests.

13

Exercise 13, first staff: Treble clef, key signature of one flat (Bb), 4/4 time signature. The staff contains a sequence of eighth notes and quarter notes, including some beamed eighth notes and quarter rests.

14

Exercise 14, first staff: Treble clef, key signature of three sharps (F#, C#, G#), 4/4 time signature. The staff contains a sequence of eighth notes and quarter notes, including some beamed eighth notes and quarter rests.

15

Exercise 15 consists of two staves of music in 4/4 time. The first staff contains measures 1 through 4, which are a continuous eighth-note scale starting on G4 and ascending to G5. The second staff contains measures 5 and 6, which are a descending eighth-note scale from G5 back to G4, followed by a repeat sign and a final measure with a whole rest.

16

Exercise 16 consists of two staves of music in 4/4 time. The first staff contains measures 1 through 4, which are a continuous eighth-note scale starting on G4 and ascending to G5. The second staff contains measures 5 and 6, which are a descending eighth-note scale from G5 back to G4, followed by a repeat sign and a final measure with a whole rest.

17

Exercise 17 consists of two staves of music in 4/4 time. The first staff contains measures 1 through 4, which are a continuous eighth-note scale starting on G4 and ascending to G5. The second staff contains measures 5 and 6, which are a descending eighth-note scale from G5 back to G4, followed by a repeat sign and a final measure with a whole rest.

18

Exercise 18 consists of two staves of music in 4/4 time. The first staff contains measures 1 through 4, which are a continuous eighth-note scale starting on G4 and ascending to G5. The second staff contains measures 5 and 6, which are a descending eighth-note scale from G5 back to G4, followed by a repeat sign and a final measure with a whole rest.

19

Exercise 19 consists of two staves of music in 4/4 time. The first staff contains measures 1 through 4, which are a continuous eighth-note scale starting on G4 and ascending to G5. The second staff contains measures 5 and 6, which are a descending eighth-note scale from G5 back to G4, followed by a repeat sign and a final measure with a whole rest.

During Rests:

- Inhale for a natural, free release.
- Remove and replace mouthpiece, in coordination with aperture formation, at the release of the air.

The Brass School [www.jcheisler.com](http://www.jcheisler.com)

# Trumpet Diatonics

## Pattern #5

Vary meter, tempo, and dynamics.

Play All Tonalties: Minors, Chromatic, Whole Tone, Diminished, Augmented

Play as high as is easy, then continue to #14.

JC Heisler

①



②



③



④



⑤

Exercise 5, measures 1-2. The first staff is in treble clef, key of D major (two sharps), and 4/4 time. It contains two measures of eighth-note patterns. The second staff continues the pattern for two more measures, ending with a double bar line.

⑥

Exercise 6, measures 1-2. The first staff is in treble clef, key of B minor (two flats), and 4/4 time. It contains two measures of eighth-note patterns. The second staff continues the pattern for two more measures, ending with a double bar line.

⑦

Exercise 7, measures 1-2. The first staff is in treble clef, key of D major (two sharps), and 4/4 time. It contains two measures of eighth-note patterns. The second staff continues the pattern for two more measures, ending with a double bar line.

⑧

Exercise 8, measures 1-2. The first staff is in treble clef, key of D major (two sharps), and 4/4 time. It contains two measures of eighth-note patterns. The second staff continues the pattern for two more measures, ending with a double bar line.

⑨

Exercise 9, measures 1-2. The first staff is in treble clef, key of B minor (two flats), and 4/4 time. It contains two measures of eighth-note patterns. The second staff continues the pattern for two more measures, ending with a double bar line.

10

Exercise 10 consists of two staves of music in G major (one sharp) and 4/4 time. The first staff contains four measures of eighth-note patterns: G4-A4-B4-C5, G4-A4-B4-C5, G4-A4-B4-C5, and G4-A4-B4-C5. The second staff contains four measures: G4-A4-B4-C5, G4-A4-B4-C5, G4-A4-B4-C5, and G4-A4-B4-C5, ending with a double bar line.

11

Exercise 11 consists of two staves of music in B-flat major (two flats) and 4/4 time. The first staff contains four measures of eighth-note patterns: Bb3-C4-D4-Eb5, Bb3-C4-D4-Eb5, Bb3-C4-D4-Eb5, and Bb3-C4-D4-Eb5. The second staff contains four measures: Bb3-C4-D4-Eb5, Bb3-C4-D4-Eb5, Bb3-C4-D4-Eb5, and Bb3-C4-D4-Eb5, ending with a double bar line.

12

Exercise 12 consists of two staves of music in D major (two sharps) and 4/4 time. The first staff contains four measures of eighth-note patterns: D4-E4-F#4-G#4, D4-E4-F#4-G#4, D4-E4-F#4-G#4, and D4-E4-F#4-G#4. The second staff contains four measures: D4-E4-F#4-G#4, D4-E4-F#4-G#4, D4-E4-F#4-G#4, and D4-E4-F#4-G#4, ending with a double bar line.

13

Exercise 13 consists of two staves of music in E major (three sharps) and 4/4 time. The first staff contains four measures of eighth-note patterns: E4-F#4-G#4-A#4, E4-F#4-G#4-A#4, E4-F#4-G#4-A#4, and E4-F#4-G#4-A#4. The second staff contains four measures: E4-F#4-G#4-A#4, E4-F#4-G#4-A#4, E4-F#4-G#4-A#4, and E4-F#4-G#4-A#4, ending with a double bar line.

14

Exercise 14 consists of two staves of music in F major (one flat) and 4/4 time. The first staff contains four measures of eighth-note patterns: F4-G4-A4-Bb4, F4-G4-A4-Bb4, F4-G4-A4-Bb4, and F4-G4-A4-Bb4. The second staff contains four measures: F4-G4-A4-Bb4, F4-G4-A4-Bb4, F4-G4-A4-Bb4, and F4-G4-A4-Bb4, ending with a double bar line.

15







⑤

⑥

⑦

⑧

⑨

10

Exercise 10 consists of two staves of music in G major (one sharp) and 4/4 time. The first staff contains four measures of music, and the second staff contains four measures, ending with a double bar line. The melody is primarily eighth-note based, with some sixteenth-note runs.

11

Exercise 11 consists of two staves of music in B-flat major (two flats) and 4/4 time. The first staff contains four measures of music, and the second staff contains four measures, ending with a double bar line. The melody is primarily eighth-note based, with some sixteenth-note runs.

12

Exercise 12 consists of two staves of music in D major (two sharps) and 4/4 time. The first staff contains four measures of music, and the second staff contains four measures, ending with a double bar line. The melody is primarily eighth-note based, with some sixteenth-note runs.

13

Exercise 13 consists of two staves of music in D major (two sharps) and 4/4 time. The first staff contains four measures of music, and the second staff contains four measures, ending with a double bar line. The melody is primarily eighth-note based, with some sixteenth-note runs.

14

Exercise 14 consists of two staves of music in D major (two sharps) and 4/4 time. The first staff contains four measures of music, and the second staff contains four measures, ending with a double bar line. The melody is primarily eighth-note based, with some sixteenth-note runs.

15

Exercise 15 consists of two staves of music in 4/4 time. The first staff begins with a treble clef, a key signature of two flats (B-flat and E-flat), and a 4/4 time signature. The melody is composed of eighth notes, starting on G4 and moving in a stepwise fashion through the scale: G4, A4, B-flat4, C5, D5, E-flat5, F5, G5. The second staff continues the melody, ending with a double bar line.

16

Exercise 16 consists of two staves of music in 4/4 time. The first staff begins with a treble clef, a key signature of two sharps (F-sharp and C-sharp), and a 4/4 time signature. The melody is composed of eighth notes, starting on G4 and moving in a stepwise fashion through the scale: G4, A4, B4, C5, D5, E5, F-sharp5, G5. The second staff continues the melody, ending with a double bar line.

17

Exercise 17 consists of two staves of music in 4/4 time. The first staff begins with a treble clef, a key signature of three flats (B-flat, E-flat, and A-flat), and a 4/4 time signature. The melody is composed of eighth notes, starting on G4 and moving in a stepwise fashion through the scale: G4, A4, B-flat4, C5, D5, E-flat5, F5, G5. The second staff continues the melody, ending with a double bar line.

18

Exercise 18 consists of two staves of music in 4/4 time. The first staff begins with a treble clef, a key signature of no sharps or flats, and a 4/4 time signature. The melody is composed of eighth notes, starting on G4 and moving in a stepwise fashion through the scale: G4, A4, B4, C5, D5, E5, F5, G5. The second staff continues the melody, ending with a double bar line.

19

Exercise 19 consists of two staves of music in 4/4 time. The first staff begins with a treble clef, a key signature of three sharps (F-sharp, C-sharp, and G-sharp), and a 4/4 time signature. The melody is composed of eighth notes, starting on G4 and moving in a stepwise fashion through the scale: G4, A4, B4, C5, D5, E5, F-sharp5, G5. The second staff continues the melody, ending with a double bar line.

During Rests:

- Inhale for a natural, free release.
- Remove and replace mouthpiece, in coordination with aperture formation, at the release of the air.

The Brass School [www.jcheisler.com](http://www.jcheisler.com)

# Trumpet Diatonics

## Pattern #7

Vary meter, tempo, and dynamics.

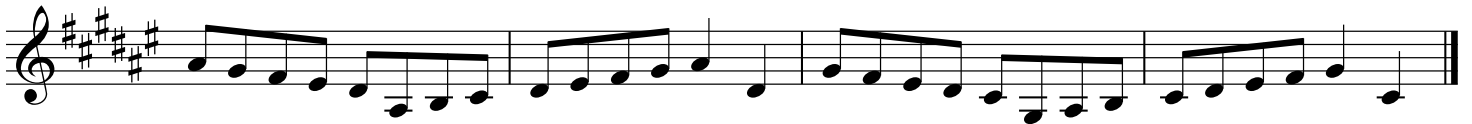
Play All Tonalties: Minors, Chromatic, Whole Tone, Diminished, Augmented  
Play as high as is easy, then continue to #14.

JC Heisler

①



②



③



④



⑤

Exercise 5, measures 1-2. The first staff is in treble clef with a key signature of two sharps (F# and C#) and a 4/4 time signature. The second staff continues the melody in the same key and time signature.

⑥

Exercise 6, measures 1-2. The first staff is in treble clef with a key signature of two flats (Bb and Eb) and a 4/4 time signature. The second staff continues the melody in the same key and time signature.

⑦

Exercise 7, measures 1-2. The first staff is in treble clef with a key signature of three sharps (F#, C#, and G#) and a 4/4 time signature. The second staff continues the melody in the same key and time signature.

⑧

Exercise 8, measures 1-2. The first staff is in treble clef with a key signature of one flat (Bb) and a 4/4 time signature. The second staff continues the melody in the same key and time signature.

⑨

Exercise 9, measures 1-2. The first staff is in treble clef with a key signature of three flats (Bb, Eb, and Ab) and a 4/4 time signature. The second staff continues the melody in the same key and time signature.

10

Exercise 10, measures 1-2. The first staff is in treble clef, key of D major (two sharps), and 4/4 time. It contains a sequence of eighth notes: D4, E4, F#4, G4, A4, B4, C5, B4, A4, G4, F#4, E4, D4. The second staff continues with: D4, E4, F#4, G4, A4, B4, C5, B4, A4, G4, F#4, E4, D4.

11

Exercise 11, measures 1-2. The first staff is in treble clef, key of B-flat major (two flats), and 4/4 time. It contains a sequence of eighth notes: Bb3, C4, D4, Eb4, F4, G4, Ab4, G4, F4, Eb4, D4, C4, Bb3. The second staff continues with: Bb3, C4, D4, Eb4, F4, G4, Ab4, G4, F4, Eb4, D4, C4, Bb3.

12

Exercise 12, measures 1-2. The first staff is in treble clef, key of D major (two sharps), and 4/4 time. It contains a sequence of eighth notes: D4, E4, F#4, G4, A4, B4, C5, B4, A4, G4, F#4, E4, D4. The second staff continues with: D4, E4, F#4, G4, A4, B4, C5, B4, A4, G4, F#4, E4, D4.

13

Exercise 13, measures 1-2. The first staff is in treble clef, key of D major (two sharps), and 4/4 time. It contains a sequence of eighth notes: D4, E4, F#4, G4, A4, B4, C5, B4, A4, G4, F#4, E4, D4. The second staff continues with: D4, E4, F#4, G4, A4, B4, C5, B4, A4, G4, F#4, E4, D4.

14

Exercise 14, measures 1-2. The first staff is in treble clef, key of D major (two sharps), and 4/4 time. It contains a sequence of eighth notes: D4, E4, F#4, G4, A4, B4, C5, B4, A4, G4, F#4, E4, D4. The second staff continues with: D4, E4, F#4, G4, A4, B4, C5, B4, A4, G4, F#4, E4, D4.

15

Exercise 15 consists of two staves of music in 4/4 time with a key signature of two flats (B-flat and E-flat). The first staff contains measures 1 and 2, and the second staff contains measures 3 and 4. The melody is a continuous eighth-note line.

16

Exercise 16 consists of two staves of music in 4/4 time with a key signature of two sharps (F-sharp and C-sharp). The first staff contains measures 1 and 2, and the second staff contains measures 3 and 4. The melody is a continuous eighth-note line.

17

Exercise 17 consists of two staves of music in 4/4 time with a key signature of three flats (B-flat, E-flat, and A-flat). The first staff contains measures 1 and 2, and the second staff contains measures 3 and 4. The melody is a continuous eighth-note line.

18

Exercise 18 consists of two staves of music in 4/4 time with a key signature of one flat (B-flat). The first staff contains measures 1 and 2, and the second staff contains measures 3 and 4. The melody is a continuous eighth-note line.

19

Exercise 19 consists of two staves of music in 4/4 time with a key signature of three sharps (F-sharp, C-sharp, and G-sharp). The first staff contains measures 1 and 2, and the second staff contains measures 3 and 4. The melody is a continuous eighth-note line.





⑤

Exercise 5, first system: Treble clef, key signature of two sharps (F# and C#), 4/4 time signature. The first staff contains four measures of music. The first measure has a quarter note G4, quarter note A4, quarter note B4, quarter note C5. The second measure has a quarter note B4, quarter note A4, quarter note G4, quarter note F#4. The third measure has a quarter note E4, quarter note D4, quarter note C4, quarter note B3. The fourth measure has a quarter note A3, quarter note G3, quarter note F#3, quarter note E3.

⑥

Exercise 6, first system: Treble clef, key signature of one flat (Bb), 4/4 time signature. The first staff contains four measures of music. The first measure has a quarter note G4, quarter note A4, quarter note B4, quarter note C5. The second measure has a quarter note B4, quarter note A4, quarter note G4, quarter note F#4. The third measure has a quarter note E4, quarter note D4, quarter note C4, quarter note B3. The fourth measure has a quarter note A3, quarter note G3, quarter note F#3, quarter note E3.

⑦

Exercise 7, first system: Treble clef, key signature of three sharps (F#, C#, G#), 4/4 time signature. The first staff contains four measures of music. The first measure has a quarter note G4, quarter note A4, quarter note B4, quarter note C5. The second measure has a quarter note B4, quarter note A4, quarter note G4, quarter note F#4. The third measure has a quarter note E4, quarter note D4, quarter note C4, quarter note B3. The fourth measure has a quarter note A3, quarter note G3, quarter note F#3, quarter note E3.

⑧

Exercise 8, first system: Treble clef, key signature of one flat (Bb), 4/4 time signature. The first staff contains four measures of music. The first measure has a quarter note G4, quarter note A4, quarter note B4, quarter note C5. The second measure has a quarter note B4, quarter note A4, quarter note G4, quarter note F#4. The third measure has a quarter note E4, quarter note D4, quarter note C4, quarter note B3. The fourth measure has a quarter note A3, quarter note G3, quarter note F#3, quarter note E3.

⑨

Exercise 9, first system: Treble clef, key signature of three flats (Bb, Eb, Ab), 4/4 time signature. The first staff contains four measures of music. The first measure has a quarter note G4, quarter note A4, quarter note B4, quarter note C5. The second measure has a quarter note B4, quarter note A4, quarter note G4, quarter note F#4. The third measure has a quarter note E4, quarter note D4, quarter note C4, quarter note B3. The fourth measure has a quarter note A3, quarter note G3, quarter note F#3, quarter note E3.

10

Exercise 10, first system: Treble clef, key signature of two sharps (F# and C#), 4/4 time signature. The first staff contains four measures of music. The first measure has a quarter rest. The second measure has a quarter rest. The third measure has a quarter rest. The fourth measure has a quarter rest.

11

Exercise 11, first system: Treble clef, key signature of two flats (Bb and Eb), 4/4 time signature. The first staff contains four measures of music. The first measure has a quarter rest. The second measure has a quarter rest. The third measure has a quarter rest. The fourth measure has a quarter rest.

12

Exercise 12, first system: Treble clef, key signature of three sharps (F#, C#, G#), 4/4 time signature. The first staff contains four measures of music. The first measure has a quarter rest. The second measure has a quarter rest. The third measure has a quarter rest. The fourth measure has a quarter rest.

13

Exercise 13, first system: Treble clef, key signature of one flat (Bb), 4/4 time signature. The first staff contains four measures of music. The first measure has a quarter rest. The second measure has a quarter rest. The third measure has a quarter rest. The fourth measure has a quarter rest.

14

Exercise 14, first system: Treble clef, key signature of three sharps (F#, C#, G#), 4/4 time signature. The first staff contains four measures of music. The first measure has a quarter rest. The second measure has a quarter rest. The third measure has a quarter rest. The fourth measure has a quarter rest.

15



During Rests:

- Inhale for a natural, free release.
- Remove and replace mouthpiece, in coordination with aperture formation, at the release of the air.

The Brass School [www.jcheisler.com](http://www.jcheisler.com)

# Trumpet Diatonics

## Pattern #9

Vary meter, tempo, and dynamics.

Play All Tonalities: Minors, Chromatic, Whole Tone, Diminished, Augmented  
Play as high as is easy, then continue to #14.

JC Heisler

①



②



③



④



⑤

Exercise 5, measures 1-2. The first staff is in treble clef with a key signature of three sharps (F#, C#, G#) and a 6/8 time signature. The second staff is in treble clef with a key signature of three sharps (F#, C#, G#). Both staves contain eighth-note patterns.

⑥

Exercise 6, measures 1-2. The first staff is in treble clef with a key signature of two flats (Bb, Eb) and a 6/8 time signature. The second staff is in treble clef with a key signature of two flats (Bb, Eb). Both staves contain eighth-note patterns.

⑦

Exercise 7, measures 1-2. The first staff is in treble clef with a key signature of four sharps (F#, C#, G#, D#) and a 6/8 time signature. The second staff is in treble clef with a key signature of four sharps (F#, C#, G#, D#). Both staves contain eighth-note patterns.

⑧

Exercise 8, measures 1-2. The first staff is in treble clef with a key signature of one flat (Bb) and a 6/8 time signature. The second staff is in treble clef with a key signature of one flat (Bb). Both staves contain eighth-note patterns.

⑨

Exercise 9, measures 1-2. The first staff is in treble clef with a key signature of three flats (Bb, Eb, Ab) and a 6/8 time signature. The second staff is in treble clef with a key signature of three flats (Bb, Eb, Ab). Both staves contain eighth-note patterns.

10

Exercise 10: Two staves of music in treble clef, key of D major (two sharps), and 6/8 time signature. The melody consists of eighth notes in a stepwise pattern, starting on D4 and ascending to D5.

11

Exercise 11: Two staves of music in treble clef, key of B minor (two flats), and 6/8 time signature. The melody consists of eighth notes in a stepwise pattern, starting on B3 and ascending to B4.

12

Exercise 12: Two staves of music in treble clef, key of D major (two sharps), and 6/8 time signature. The melody consists of eighth notes in a stepwise pattern, starting on D4 and ascending to D5.

13

Exercise 13: Two staves of music in treble clef, key of B minor (two flats), and 6/8 time signature. The melody consists of eighth notes in a stepwise pattern, starting on B3 and ascending to B4.

14

Exercise 14: Two staves of music in treble clef, key of D major (two sharps), and 6/8 time signature. The melody consists of eighth notes in a stepwise pattern, starting on D4 and ascending to D5.

15

Exercise 15 consists of two staves of music. The first staff begins with a treble clef, a key signature of three flats (B-flat, E-flat, A-flat), and a 6/8 time signature. The melody is a continuous eighth-note line: G4, A4, B-flat4, C5, D5, E5, F5, G5, A5, B-flat5, C6, D6, E6, F6, G6, A6, B-flat6, C7, D7, E7, F7, G7, A7, B-flat7, C8, D8, E8, F8, G8, A8, B-flat8, C9, D9, E9, F9, G9, A9, B-flat9, C10, D10, E10, F10, G10, A10, B-flat10, C11, D11, E11, F11, G11, A11, B-flat11, C12, D12, E12, F12, G12, A12, B-flat12, C13, D13, E13, F13, G13, A13, B-flat13, C14, D14, E14, F14, G14, A14, B-flat14, C15, D15, E15, F15, G15, A15, B-flat15, C16, D16, E16, F16, G16, A16, B-flat16, C17, D17, E17, F17, G17, A17, B-flat17, C18, D18, E18, F18, G18, A18, B-flat18, C19, D19, E19, F19, G19, A19, B-flat19, C20, D20, E20, F20, G20, A20, B-flat20, C21, D21, E21, F21, G21, A21, B-flat21, C22, D22, E22, F22, G22, A22, B-flat22, C23, D23, E23, F23, G23, A23, B-flat23, C24, D24, E24, F24, G24, A24, B-flat24, C25, D25, E25, F25, G25, A25, B-flat25, C26, D26, E26, F26, G26, A26, B-flat26, C27, D27, E27, F27, G27, A27, B-flat27, C28, D28, E28, F28, G28, A28, B-flat28, C29, D29, E29, F29, G29, A29, B-flat29, C30, D30, E30, F30, G30, A30, B-flat30, C31, D31, E31, F31, G31, A31, B-flat31, C32, D32, E32, F32, G32, A32, B-flat32, C33, D33, E33, F33, G33, A33, B-flat33, C34, D34, E34, F34, G34, A34, B-flat34, C35, D35, E35, F35, G35, A35, B-flat35, C36, D36, E36, F36, G36, A36, B-flat36, C37, D37, E37, F37, G37, A37, B-flat37, C38, D38, E38, F38, G38, A38, B-flat38, C39, D39, E39, F39, G39, A39, B-flat39, C40, D40, E40, F40, G40, A40, B-flat40, C41, D41, E41, F41, G41, A41, B-flat41, C42, D42, E42, F42, G42, A42, B-flat42, C43, D43, E43, F43, G43, A43, B-flat43, C44, D44, E44, F44, G44, A44, B-flat44, C45, D45, E45, F45, G45, A45, B-flat45, C46, D46, E46, F46, G46, A46, B-flat46, C47, D47, E47, F47, G47, A47, B-flat47, C48, D48, E48, F48, G48, A48, B-flat48, C49, D49, E49, F49, G49, A49, B-flat49, C50, D50, E50, F50, G50, A50, B-flat50, C51, D51, E51, F51, G51, A51, B-flat51, C52, D52, E52, F52, G52, A52, B-flat52, C53, D53, E53, F53, G53, A53, B-flat53, C54, D54, E54, F54, G54, A54, B-flat54, C55, D55, E55, F55, G55, A55, B-flat55, C56, D56, E56, F56, G56, A56, B-flat56, C57, D57, E57, F57, G57, A57, B-flat57, C58, D58, E58, F58, G58, A58, B-flat58, C59, D59, E59, F59, G59, A59, B-flat59, C60, D60, E60, F60, G60, A60, B-flat60, C61, D61, E61, F61, G61, A61, B-flat61, C62, D62, E62, F62, G62, A62, B-flat62, C63, D63, E63, F63, G63, A63, B-flat63, C64, D64, E64, F64, G64, A64, B-flat64, C65, D65, E65, F65, G65, A65, B-flat65, C66, D66, E66, F66, G66, A66, B-flat66, C67, D67, E67, F67, G67, A67, B-flat67, C68, D68, E68, F68, G68, A68, B-flat68, C69, D69, E69, F69, G69, A69, B-flat69, C70, D70, E70, F70, G70, A70, B-flat70, C71, D71, E71, F71, G71, A71, B-flat71, C72, D72, E72, F72, G72, A72, B-flat72, C73, D73, E73, F73, G73, A73, B-flat73, C74, D74, E74, F74, G74, A74, B-flat74, C75, D75, E75, F75, G75, A75, B-flat75, C76, D76, E76, F76, G76, A76, B-flat76, C77, D77, E77, F77, G77, A77, B-flat77, C78, D78, E78, F78, G78, A78, B-flat78, C79, D79, E79, F79, G79, A79, B-flat79, C80, D80, E80, F80, G80, A80, B-flat80, C81, D81, E81, F81, G81, A81, B-flat81, C82, D82, E82, F82, G82, A82, B-flat82, C83, D83, E83, F83, G83, A83, B-flat83, C84, D84, E84, F84, G84, A84, B-flat84, C85, D85, E85, F85, G85, A85, B-flat85, C86, D86, E86, F86, G86, A86, B-flat86, C87, D87, E87, F87, G87, A87, B-flat87, C88, D88, E88, F88, G88, A88, B-flat88, C89, D89, E89, F89, G89, A89, B-flat89, C90, D90, E90, F90, G90, A90, B-flat90, C91, D91, E91, F91, G91, A91, B-flat91, C92, D92, E92, F92, G92, A92, B-flat92, C93, D93, E93, F93, G93, A93, B-flat93, C94, D94, E94, F94, G94, A94, B-flat94, C95, D95, E95, F95, G95, A95, B-flat95, C96, D96, E96, F96, G96, A96, B-flat96, C97, D97, E97, F97, G97, A97, B-flat97, C98, D98, E98, F98, G98, A98, B-flat98, C99, D99, E99, F99, G99, A99, B-flat99, C100, D100, E100, F100, G100, A100, B-flat100, C101, D101, E101, F101, G101, A101, B-flat101, C102, D102, E102, F102, G102, A102, B-flat102, C103, D103, E103, F103, G103, A103, B-flat103, C104, D104, E104, F104, G104, A104, B-flat104, C105, D105, E105, F105, G105, A105, B-flat105, C106, D106, E106, F106, G106, A106, B-flat106, C107, D107, E107, F107, G107, A107, B-flat107, C108, D108, E108, F108, G108, A108, B-flat108, C109, D109, E109, F109, G109, A109, B-flat109, C110, D110, E110, F110, G110, A110, B-flat110, C111, D111, E111, F111, G111, A111, B-flat111, C112, D112, E112, F112, G112, A112, B-flat112, C113, D113, E113, F113, G113, A113, B-flat113, C114, D114, E114, F114, G114, A114, B-flat114, C115, D115, E115, F115, G115, A115, B-flat115, C116, D116, E116, F116, G116, A116, B-flat116, C117, D117, E117, F117, G117, A117, B-flat117, C118, D118, E118, F118, G118, A118, B-flat118, C119, D119, E119, F119, G119, A119, B-flat119, C120, D120, E120, F120, G120, A120, B-flat120, C121, D121, E121, F121, G121, A121, B-flat121, C122, D122, E122, F122, G122, A122, B-flat122, C123, D123, E123, F123, G123, A123, B-flat123, C124, D124, E124, F124, G124, A124, B-flat124, C125, D125, E125, F125, G125, A125, B-flat125, C126, D126, E126, F126, G126, A126, B-flat126, C127, D127, E127, F127, G127, A127, B-flat127, C128, D128, E128, F128, G128, A128, B-flat128, C129, D129, E129, F129, G129, A129, B-flat129, C130, D130, E130, F130, G130, A130, B-flat130, C131, D131, E131, F131, G131, A131, B-flat131, C132, D132, E132, F132, G132, A132, B-flat132, C133, D133, E133, F133, G133, A133, B-flat133, C134, D134, E134, F134, G134, A134, B-flat134, C135, D135, E135, F135, G135, A135, B-flat135, C136, D136, E136, F136, G136, A136, B-flat136, C137, D137, E137, F137, G137, A137, B-flat137, C138, D138, E138, F138, G138, A138, B-flat138, C139, D139, E139, F139, G139, A139, B-flat139, C140, D140, E140, F140, G140, A140, B-flat140, C141, D141, E141, F141, G141, A141, B-flat141, C142, D142, E142, F142, G142, A142, B-flat142, C143, D143, E143, F143, G143, A143, B-flat143, C144, D144, E144, F144, G144, A144, B-flat144, C145, D145, E145, F145, G145, A145, B-flat145, C146, D146, E146, F146, G146, A146, B-flat146, C147, D147, E147, F147, G147, A147, B-flat147, C148, D148, E148, F148, G148, A148, B-flat148, C149, D149, E149, F149, G149, A149, B-flat149, C150, D150, E150, F150, G150, A150, B-flat150, C151, D151, E151, F151, G151, A151, B-flat151, C152, D152, E152, F152, G152, A152, B-flat152, C153, D153, E153, F153, G153, A153, B-flat153, C154, D154, E154, F154, G154, A154, B-flat154, C155, D155, E155, F155, G155, A155, B-flat155, C156, D156, E156, F156, G156, A156, B-flat156, C157, D157, E157, F157, G157, A157, B-flat157, C158, D158, E158, F158, G158, A158, B-flat158, C159, D159, E159, F159, G159, A159, B-flat159, C160, D160, E160, F160, G160, A160, B-flat160, C161, D161, E161, F161, G161, A161, B-flat161, C162, D162, E162, F162, G162, A162, B-flat162, C163, D163, E163, F163, G163, A163, B-flat163, C164, D164, E164, F164, G164, A164, B-flat164, C165, D165, E165, F165, G165, A165, B-flat165, C166, D166, E166, F166, G166, A166, B-flat166, C167, D167, E167, F167, G167, A167, B-flat167, C168, D168, E168, F168, G168, A168, B-flat168, C169, D169, E169, F169, G169, A169, B-flat169, C170, D170, E170, F170, G170, A170, B-flat170, C171, D171, E171, F171, G171, A171, B-flat171, C172, D172, E172, F172, G172, A172, B-flat172, C173, D173, E173, F173, G173, A173, B-flat173, C174, D174, E174, F174, G174, A174, B-flat174, C175, D175, E175, F175, G175, A175, B-flat175, C176, D176, E176, F176, G176, A176, B-flat176, C177, D177, E177, F177, G177, A177, B-flat177, C178, D178, E178, F178, G178, A178, B-flat178, C179, D179, E179, F179, G179, A179, B-flat179, C180, D180, E180, F180, G180, A180, B-flat180, C181, D181, E181, F181, G181, A181, B-flat181, C182, D182, E182, F182, G182, A182, B-flat182, C183, D183, E183, F183, G183, A183, B-flat183, C184, D184, E184, F184, G184, A184, B-flat184, C185, D185, E185, F185, G185, A185, B-flat185, C186, D186, E186, F186, G186, A186, B-flat186, C187, D187, E187, F187, G187, A187, B-flat187, C188, D188, E188, F188, G188, A188, B-flat188, C189, D189, E189, F189, G189, A189, B-flat189, C190, D190, E190, F190, G190, A190, B-flat190, C191, D191, E191, F191, G191, A191, B-flat191, C192, D192, E192, F192, G192, A192, B-flat192, C193, D193, E193, F193, G193, A193, B-flat193, C194, D194, E194, F194, G194, A194, B-flat194, C195, D195, E195, F195, G195, A195, B-flat195, C196, D196, E196, F196, G196, A196, B-flat196, C197, D197, E197, F197, G197, A197, B-flat197, C198, D198, E198, F198, G198, A198, B-flat198, C199, D199, E199, F199, G199, A199, B-flat199, C200, D200, E200, F200, G200, A200, B-flat200, C201, D201, E201, F201, G201, A201, B-flat201, C202, D202, E202, F202, G202, A202, B-flat202, C203, D203, E203, F203, G203, A203, B-flat203, C204, D204, E204, F204, G204, A204, B-flat204, C205, D205, E205, F205, G205, A205, B-flat205, C206, D206, E206, F206, G206, A206, B-flat206, C207, D207, E207, F207, G207, A207, B-flat207, C208, D208, E208, F208, G208, A208, B-flat208, C209, D209, E209, F209, G209, A209, B-flat209, C210, D210, E210, F210, G210, A210, B-flat210, C211, D211, E211, F211, G211, A211, B-flat211, C212, D212, E212, F212, G212, A212, B-flat212, C213, D213, E213, F213, G213, A213, B-flat213, C214, D214, E214, F214, G214, A214, B-flat214, C215, D215, E215, F215, G215, A215, B-flat215, C216, D216, E216, F216, G216, A216, B-flat216, C217, D217, E217, F217, G217, A217, B-flat217, C218, D218, E218, F218, G218, A218, B-flat218, C219, D219, E219, F219, G219, A219, B-flat219, C220, D220, E220, F220, G220, A220, B-flat220, C221, D221, E221, F221, G221, A221, B-flat221, C222, D222, E222, F222, G222, A222, B-flat222, C223, D223, E223, F223, G223, A223, B-flat223, C224, D224, E224, F224, G224, A224, B-flat224, C225, D225, E225, F225, G225, A225, B-flat225, C226, D226, E226, F226, G226, A226, B-flat226, C227, D227, E227, F227, G227, A227, B-flat227, C228, D228, E228, F228, G228, A228, B-flat228, C229, D229, E229, F229, G229, A229, B-flat229, C230, D230, E230, F230, G230, A230, B-flat230, C231, D231, E231, F231, G231, A231, B-flat231, C232, D232, E232, F232, G232, A232, B-flat232, C233, D233, E233, F233, G233, A233, B-flat233, C234, D234, E234, F234, G234, A234, B-flat234, C235, D235, E235, F235, G235, A235, B-flat235, C236, D236, E236, F236, G236, A236, B-flat236, C237, D237, E237, F237, G237, A237, B-flat237, C238, D238, E238, F238, G238, A238, B-flat238, C239, D239, E239, F239, G239, A239, B-flat239, C240, D240, E240, F240, G240, A240, B-flat240, C241, D241, E241, F241, G241, A241, B-flat241, C242, D242, E242, F242, G242, A242, B-flat242, C243, D243, E243, F243, G243, A243, B-flat243, C244, D244, E244, F244, G244, A244, B-flat244, C245, D245, E245, F245, G245, A245, B-flat245, C246, D246, E246, F246, G246, A246, B-flat246, C247, D247, E247, F247, G247, A247, B-flat247, C248, D248, E248, F248, G248, A248, B-flat248, C249, D249, E249, F249, G249, A249, B-flat249, C250, D250, E250, F250, G250, A250, B-flat250, C251, D251, E251, F251, G251, A251, B-flat251, C252, D252, E252, F252, G252, A252, B-flat252, C253, D253, E253, F253, G253, A253, B-flat253, C254, D254, E254, F254, G254, A254, B-flat254, C255, D255, E255, F255, G255, A255, B-flat255, C256, D256, E256, F256, G256, A256, B-flat256, C257, D257, E257, F257, G257, A257, B-flat257, C258, D258, E258, F258, G258, A258, B-flat258, C259, D259, E259, F259, G259, A259, B-flat259, C260, D260, E260, F260, G260, A260, B-flat260, C261, D261, E261, F261, G261, A261, B-flat261, C262, D262, E262, F262, G262, A262, B-flat262, C263, D263, E263, F263, G263, A263, B-flat263, C264, D264, E264, F264, G264, A264, B-flat264, C265, D265, E265, F265, G265, A265, B-flat265, C266, D266, E266, F266, G266, A266, B-flat266, C267, D267, E267, F267, G267, A267, B-flat267, C268, D268, E268, F268, G268, A268, B-flat268, C269, D269, E269, F269, G269, A269, B-flat269, C270, D270, E270, F270, G270, A270, B-flat270, C271, D271, E271, F271, G271, A271, B-flat271, C272, D272, E272, F272, G272, A272, B-flat272, C273, D273, E273, F273, G273, A273, B-flat273, C274, D274, E274, F274, G274, A274, B-flat274, C275, D275, E275, F275, G275, A275, B-flat275, C276, D276, E276, F276, G276, A276, B-flat276, C277, D277, E277, F277, G277, A277, B-flat277, C278, D278, E278, F278, G278, A278, B-flat278, C279, D279, E279, F279, G279, A279, B-flat279, C280, D280, E280, F280, G280, A280, B-flat280, C281, D281, E281, F281, G281, A281, B-flat281, C282, D282, E282, F282, G282, A282, B-flat282, C283, D283, E283, F283, G283, A283, B-flat283, C284, D284, E284, F284, G284, A284, B-flat284, C285, D285, E285, F285, G285, A285, B-flat285, C286, D286, E286, F286, G286, A286, B-flat286, C287, D287, E287, F287, G287, A287, B-flat287, C288, D288, E288, F288, G288, A288, B-flat288, C289, D289, E289, F289, G289, A289, B-flat289, C290, D290, E290, F290, G290, A290, B-flat290, C291, D291, E291, F291, G291, A291, B-flat291, C292, D292, E292, F292, G292, A292, B-flat292, C293, D293, E293, F293, G293, A293, B-flat293, C294, D294, E294, F294, G294, A294, B-flat294, C295, D295, E295, F295, G295, A295, B-flat295, C296, D296, E296, F296, G296, A296, B-flat296, C297, D297, E297, F297, G297, A297, B-flat297, C298, D298, E298, F298, G298, A298, B-flat298, C299, D299, E299, F299, G299, A299, B-flat299, C300, D300, E300, F300, G300, A300, B-flat300, C301, D301, E301, F301, G301, A301, B-flat301, C302, D302, E302, F302, G302, A302, B-flat302, C303, D303, E303, F303, G303, A303, B-flat303, C304, D304, E304, F304, G304, A304, B-flat304, C305, D305, E305, F305, G305, A305, B-flat305, C306, D306, E306, F306, G306, A306, B-flat306, C307, D307, E307, F307, G307, A307, B-flat307, C308, D308, E308, F308, G308, A308, B-flat308, C309, D309, E309, F309, G309, A309, B-flat309, C310, D310, E310, F310, G310, A310, B-flat310, C311, D311, E311, F311, G311, A311, B-flat311, C312, D312, E312, F312, G312, A312, B-flat312, C313, D313, E313, F313, G313, A313, B-flat313, C314, D314, E314, F314, G314, A314, B-flat314, C315, D315, E315, F315, G315, A315, B-flat315, C316, D316, E316, F316, G316, A316, B-flat316, C317, D317, E317, F317, G317, A317, B-flat317, C318, D318, E318, F318, G318, A318, B-flat318, C319, D319, E319, F319, G319, A319, B-flat319, C320, D320, E320, F320, G320, A320, B-flat320, C321, D321, E321, F321, G321, A321, B-flat321, C322, D322, E322, F322, G322, A322, B-flat322, C323, D323, E323, F323, G323, A323, B-flat323, C324, D324, E324, F324, G324, A324, B-flat324, C325, D325, E325, F325, G325, A325, B-flat325, C326, D326, E326, F326, G326, A326, B-flat326, C327, D327, E327, F327, G327, A327, B-flat327, C328, D328, E328, F328, G328, A328, B-flat328, C329, D329, E329, F329, G329, A329, B-flat329, C330, D330, E330, F330, G330, A330, B-flat330, C331, D331, E331, F331, G331, A331, B-flat331, C332, D332, E332, F332, G332, A332, B-flat332, C333, D333, E333, F333, G333, A333, B-flat333, C334, D334, E334, F334, G334, A334, B-flat334, C335, D335, E335, F335, G335, A335, B-flat335, C336, D336, E336, F336, G336, A336, B-flat336, C337, D337, E337, F337, G337, A337, B-flat337, C338, D338, E338, F338, G338, A338, B-flat338, C339, D339, E339, F339, G339, A339, B-flat339, C340, D340, E340, F340, G340, A340, B-flat340, C341, D341, E341, F341, G341, A341, B-flat341, C342, D342, E342, F342, G342, A342, B-flat342, C343, D343, E343, F343, G343, A343, B-flat343, C344, D344, E344, F344, G344, A344, B-flat344, C345, D345, E345, F345, G345, A345, B-flat345, C346, D346, E346, F346, G346, A346, B-flat346, C347, D347, E347, F347, G347, A347, B-flat347, C348, D348, E348, F348, G348, A348, B-flat348, C349, D349, E349, F349, G349, A349, B-flat349, C350, D350, E350, F350, G350, A350, B-flat350, C351, D351, E351, F351, G351, A351, B-flat351, C352, D352, E352, F352, G352, A352, B-flat352, C353, D353, E353, F353, G353, A353, B-flat353, C354, D354, E354, F354, G354, A354, B-flat354, C355, D355, E355, F355, G355, A355, B-flat355, C356, D356, E356, F356, G356, A356, B-flat356, C357, D357, E357, F357, G357, A357, B-flat357, C358, D358, E358, F358, G358, A358, B-flat358, C359, D359, E359, F359, G359, A359, B-flat359, C360, D360, E360, F360, G360, A360, B-flat360, C361, D361, E361, F361, G361, A361, B-flat361, C362, D362, E362, F362, G362,



During Rests:

- Inhale for a natural, free release.
- Remove and replace mouthpiece, in coordination with aperture formation, at the release of the air.

The Brass School [www.jcheisler.com](http://www.jcheisler.com)

# Trumpet Diatonics

## Pattern #10

Vary meter, tempo, and dynamics.

Play All Tonalities: Minors, Chromatic, Whole Tone, Diminished, Augmented  
Play as high as is easy, then continue to #14.

JC Heisler

①



⑤

Exercise 5 consists of two staves of music. The first staff begins with a treble clef, a key signature of three sharps (F#, C#, G#), and a 6/8 time signature. The melody is a continuous eighth-note line: G4-A4-B4-C5, D5-E5-F5-G5, A5-B5-C6-D6, E6-F6-G6-A6. The second staff continues the melody: B6-C7-D7-E7, F7-G7-A7-B7, C8-D8-E8-F8, G8-A8-B8-C9.

⑥

Exercise 6 consists of two staves of music. The first staff begins with a treble clef, a key signature of two flats (Bb, Eb), and a 6/8 time signature. The melody is a continuous eighth-note line: G3-A3-B3-C4, D4-E4-F4-G4, A4-B4-C5-D5, E5-F5-G5-A5. The second staff continues the melody: B5-C6-D6-E6, F6-G6-A6-B6, C7-D7-E7-F7, G7-A7-B7-C8.

⑦

Exercise 7 consists of two staves of music. The first staff begins with a treble clef, a key signature of four sharps (F#, C#, G#, D#), and a 6/8 time signature. The melody is a continuous eighth-note line: G4-A4-B4-C5, D5-E5-F5-G5, A5-B5-C6-D6, E6-F6-G6-A6. The second staff continues the melody: B6-C7-D7-E7, F7-G7-A7-B7, C8-D8-E8-F8, G8-A8-B8-C9.

⑧

Exercise 8 consists of two staves of music. The first staff begins with a treble clef, a key signature of one flat (Bb), and a 6/8 time signature. The melody is a continuous eighth-note line: G3-A3-B3-C4, D4-E4-F4-G4, A4-B4-C5-D5, E5-F5-G5-A5. The second staff continues the melody: B5-C6-D6-E6, F6-G6-A6-B6, C7-D7-E7-F7, G7-A7-B7-C8.

⑨

Exercise 9 consists of two staves of music. The first staff begins with a treble clef, a key signature of three flats (Bb, Eb, Ab), and a 6/8 time signature. The melody is a continuous eighth-note line: G3-A3-B3-C4, D4-E4-F4-G4, A4-B4-C5-D5, E5-F5-G5-A5. The second staff continues the melody: B5-C6-D6-E6, F6-G6-A6-B6, C7-D7-E7-F7, G7-A7-B7-C8.



15

Exercise 15 consists of two staves of music. The first staff begins with a treble clef, a key signature of three flats (B-flat, E-flat, A-flat), and a 6/8 time signature. The melody is a continuous eighth-note line: G4, A4, B-flat4, C5, D5, E5, F5, G5, A5, B-flat5, C6, D6, E6, F6, G6, A6, B-flat6, C7, D7, E7, F7, G7, A7, B-flat7, C8, D8, E8, F8, G8, A8, B-flat8, C9, D9, E9, F9, G9, A9, B-flat9, C10, D10, E10, F10, G10, A10, B-flat10, C11, D11, E11, F11, G11, A11, B-flat11, C12, D12, E12, F12, G12, A12, B-flat12, C13, D13, E13, F13, G13, A13, B-flat13, C14, D14, E14, F14, G14, A14, B-flat14, C15, D15, E15, F15, G15, A15, B-flat15, C16, D16, E16, F16, G16, A16, B-flat16, C17, D17, E17, F17, G17, A17, B-flat17, C18, D18, E18, F18, G18, A18, B-flat18, C19, D19, E19, F19, G19, A19, B-flat19, C20, D20, E20, F20, G20, A20, B-flat20, C21, D21, E21, F21, G21, A21, B-flat21, C22, D22, E22, F22, G22, A22, B-flat22, C23, D23, E23, F23, G23, A23, B-flat23, C24, D24, E24, F24, G24, A24, B-flat24, C25, D25, E25, F25, G25, A25, B-flat25, C26, D26, E26, F26, G26, A26, B-flat26, C27, D27, E27, F27, G27, A27, B-flat27, C28, D28, E28, F28, G28, A28, B-flat28, C29, D29, E29, F29, G29, A29, B-flat29, C30, D30, E30, F30, G30, A30, B-flat30, C31, D31, E31, F31, G31, A31, B-flat31, C32, D32, E32, F32, G32, A32, B-flat32, C33, D33, E33, F33, G33, A33, B-flat33, C34, D34, E34, F34, G34, A34, B-flat34, C35, D35, E35, F35, G35, A35, B-flat35, C36, D36, E36, F36, G36, A36, B-flat36, C37, D37, E37, F37, G37, A37, B-flat37, C38, D38, E38, F38, G38, A38, B-flat38, C39, D39, E39, F39, G39, A39, B-flat39, C40, D40, E40, F40, G40, A40, B-flat40, C41, D41, E41, F41, G41, A41, B-flat41, C42, D42, E42, F42, G42, A42, B-flat42, C43, D43, E43, F43, G43, A43, B-flat43, C44, D44, E44, F44, G44, A44, B-flat44, C45, D45, E45, F45, G45, A45, B-flat45, C46, D46, E46, F46, G46, A46, B-flat46, C47, D47, E47, F47, G47, A47, B-flat47, C48, D48, E48, F48, G48, A48, B-flat48, C49, D49, E49, F49, G49, A49, B-flat49, C50, D50, E50, F50, G50, A50, B-flat50, C51, D51, E51, F51, G51, A51, B-flat51, C52, D52, E52, F52, G52, A52, B-flat52, C53, D53, E53, F53, G53, A53, B-flat53, C54, D54, E54, F54, G54, A54, B-flat54, C55, D55, E55, F55, G55, A55, B-flat55, C56, D56, E56, F56, G56, A56, B-flat56, C57, D57, E57, F57, G57, A57, B-flat57, C58, D58, E58, F58, G58, A58, B-flat58, C59, D59, E59, F59, G59, A59, B-flat59, C60, D60, E60, F60, G60, A60, B-flat60, C61, D61, E61, F61, G61, A61, B-flat61, C62, D62, E62, F62, G62, A62, B-flat62, C63, D63, E63, F63, G63, A63, B-flat63, C64, D64, E64, F64, G64, A64, B-flat64, C65, D65, E65, F65, G65, A65, B-flat65, C66, D66, E66, F66, G66, A66, B-flat66, C67, D67, E67, F67, G67, A67, B-flat67, C68, D68, E68, F68, G68, A68, B-flat68, C69, D69, E69, F69, G69, A69, B-flat69, C70, D70, E70, F70, G70, A70, B-flat70, C71, D71, E71, F71, G71, A71, B-flat71, C72, D72, E72, F72, G72, A72, B-flat72, C73, D73, E73, F73, G73, A73, B-flat73, C74, D74, E74, F74, G74, A74, B-flat74, C75, D75, E75, F75, G75, A75, B-flat75, C76, D76, E76, F76, G76, A76, B-flat76, C77, D77, E77, F77, G77, A77, B-flat77, C78, D78, E78, F78, G78, A78, B-flat78, C79, D79, E79, F79, G79, A79, B-flat79, C80, D80, E80, F80, G80, A80, B-flat80, C81, D81, E81, F81, G81, A81, B-flat81, C82, D82, E82, F82, G82, A82, B-flat82, C83, D83, E83, F83, G83, A83, B-flat83, C84, D84, E84, F84, G84, A84, B-flat84, C85, D85, E85, F85, G85, A85, B-flat85, C86, D86, E86, F86, G86, A86, B-flat86, C87, D87, E87, F87, G87, A87, B-flat87, C88, D88, E88, F88, G88, A88, B-flat88, C89, D89, E89, F89, G89, A89, B-flat89, C90, D90, E90, F90, G90, A90, B-flat90, C91, D91, E91, F91, G91, A91, B-flat91, C92, D92, E92, F92, G92, A92, B-flat92, C93, D93, E93, F93, G93, A93, B-flat93, C94, D94, E94, F94, G94, A94, B-flat94, C95, D95, E95, F95, G95, A95, B-flat95, C96, D96, E96, F96, G96, A96, B-flat96, C97, D97, E97, F97, G97, A97, B-flat97, C98, D98, E98, F98, G98, A98, B-flat98, C99, D99, E99, F99, G99, A99, B-flat99, C100, D100, E100, F100, G100, A100, B-flat100, C101, D101, E101, F101, G101, A101, B-flat101, C102, D102, E102, F102, G102, A102, B-flat102, C103, D103, E103, F103, G103, A103, B-flat103, C104, D104, E104, F104, G104, A104, B-flat104, C105, D105, E105, F105, G105, A105, B-flat105, C106, D106, E106, F106, G106, A106, B-flat106, C107, D107, E107, F107, G107, A107, B-flat107, C108, D108, E108, F108, G108, A108, B-flat108, C109, D109, E109, F109, G109, A109, B-flat109, C110, D110, E110, F110, G110, A110, B-flat110, C111, D111, E111, F111, G111, A111, B-flat111, C112, D112, E112, F112, G112, A112, B-flat112, C113, D113, E113, F113, G113, A113, B-flat113, C114, D114, E114, F114, G114, A114, B-flat114, C115, D115, E115, F115, G115, A115, B-flat115, C116, D116, E116, F116, G116, A116, B-flat116, C117, D117, E117, F117, G117, A117, B-flat117, C118, D118, E118, F118, G118, A118, B-flat118, C119, D119, E119, F119, G119, A119, B-flat119, C120, D120, E120, F120, G120, A120, B-flat120, C121, D121, E121, F121, G121, A121, B-flat121, C122, D122, E122, F122, G122, A122, B-flat122, C123, D123, E123, F123, G123, A123, B-flat123, C124, D124, E124, F124, G124, A124, B-flat124, C125, D125, E125, F125, G125, A125, B-flat125, C126, D126, E126, F126, G126, A126, B-flat126, C127, D127, E127, F127, G127, A127, B-flat127, C128, D128, E128, F128, G128, A128, B-flat128, C129, D129, E129, F129, G129, A129, B-flat129, C130, D130, E130, F130, G130, A130, B-flat130, C131, D131, E131, F131, G131, A131, B-flat131, C132, D132, E132, F132, G132, A132, B-flat132, C133, D133, E133, F133, G133, A133, B-flat133, C134, D134, E134, F134, G134, A134, B-flat134, C135, D135, E135, F135, G135, A135, B-flat135, C136, D136, E136, F136, G136, A136, B-flat136, C137, D137, E137, F137, G137, A137, B-flat137, C138, D138, E138, F138, G138, A138, B-flat138, C139, D139, E139, F139, G139, A139, B-flat139, C140, D140, E140, F140, G140, A140, B-flat140, C141, D141, E141, F141, G141, A141, B-flat141, C142, D142, E142, F142, G142, A142, B-flat142, C143, D143, E143, F143, G143, A143, B-flat143, C144, D144, E144, F144, G144, A144, B-flat144, C145, D145, E145, F145, G145, A145, B-flat145, C146, D146, E146, F146, G146, A146, B-flat146, C147, D147, E147, F147, G147, A147, B-flat147, C148, D148, E148, F148, G148, A148, B-flat148, C149, D149, E149, F149, G149, A149, B-flat149, C150, D150, E150, F150, G150, A150, B-flat150, C151, D151, E151, F151, G151, A151, B-flat151, C152, D152, E152, F152, G152, A152, B-flat152, C153, D153, E153, F153, G153, A153, B-flat153, C154, D154, E154, F154, G154, A154, B-flat154, C155, D155, E155, F155, G155, A155, B-flat155, C156, D156, E156, F156, G156, A156, B-flat156, C157, D157, E157, F157, G157, A157, B-flat157, C158, D158, E158, F158, G158, A158, B-flat158, C159, D159, E159, F159, G159, A159, B-flat159, C160, D160, E160, F160, G160, A160, B-flat160, C161, D161, E161, F161, G161, A161, B-flat161, C162, D162, E162, F162, G162, A162, B-flat162, C163, D163, E163, F163, G163, A163, B-flat163, C164, D164, E164, F164, G164, A164, B-flat164, C165, D165, E165, F165, G165, A165, B-flat165, C166, D166, E166, F166, G166, A166, B-flat166, C167, D167, E167, F167, G167, A167, B-flat167, C168, D168, E168, F168, G168, A168, B-flat168, C169, D169, E169, F169, G169, A169, B-flat169, C170, D170, E170, F170, G170, A170, B-flat170, C171, D171, E171, F171, G171, A171, B-flat171, C172, D172, E172, F172, G172, A172, B-flat172, C173, D173, E173, F173, G173, A173, B-flat173, C174, D174, E174, F174, G174, A174, B-flat174, C175, D175, E175, F175, G175, A175, B-flat175, C176, D176, E176, F176, G176, A176, B-flat176, C177, D177, E177, F177, G177, A177, B-flat177, C178, D178, E178, F178, G178, A178, B-flat178, C179, D179, E179, F179, G179, A179, B-flat179, C180, D180, E180, F180, G180, A180, B-flat180, C181, D181, E181, F181, G181, A181, B-flat181, C182, D182, E182, F182, G182, A182, B-flat182, C183, D183, E183, F183, G183, A183, B-flat183, C184, D184, E184, F184, G184, A184, B-flat184, C185, D185, E185, F185, G185, A185, B-flat185, C186, D186, E186, F186, G186, A186, B-flat186, C187, D187, E187, F187, G187, A187, B-flat187, C188, D188, E188, F188, G188, A188, B-flat188, C189, D189, E189, F189, G189, A189, B-flat189, C190, D190, E190, F190, G190, A190, B-flat190, C191, D191, E191, F191, G191, A191, B-flat191, C192, D192, E192, F192, G192, A192, B-flat192, C193, D193, E193, F193, G193, A193, B-flat193, C194, D194, E194, F194, G194, A194, B-flat194, C195, D195, E195, F195, G195, A195, B-flat195, C196, D196, E196, F196, G196, A196, B-flat196, C197, D197, E197, F197, G197, A197, B-flat197, C198, D198, E198, F198, G198, A198, B-flat198, C199, D199, E199, F199, G199, A199, B-flat199, C200, D200, E200, F200, G200, A200, B-flat200, C201, D201, E201, F201, G201, A201, B-flat201, C202, D202, E202, F202, G202, A202, B-flat202, C203, D203, E203, F203, G203, A203, B-flat203, C204, D204, E204, F204, G204, A204, B-flat204, C205, D205, E205, F205, G205, A205, B-flat205, C206, D206, E206, F206, G206, A206, B-flat206, C207, D207, E207, F207, G207, A207, B-flat207, C208, D208, E208, F208, G208, A208, B-flat208, C209, D209, E209, F209, G209, A209, B-flat209, C210, D210, E210, F210, G210, A210, B-flat210, C211, D211, E211, F211, G211, A211, B-flat211, C212, D212, E212, F212, G212, A212, B-flat212, C213, D213, E213, F213, G213, A213, B-flat213, C214, D214, E214, F214, G214, A214, B-flat214, C215, D215, E215, F215, G215, A215, B-flat215, C216, D216, E216, F216, G216, A216, B-flat216, C217, D217, E217, F217, G217, A217, B-flat217, C218, D218, E218, F218, G218, A218, B-flat218, C219, D219, E219, F219, G219, A219, B-flat219, C220, D220, E220, F220, G220, A220, B-flat220, C221, D221, E221, F221, G221, A221, B-flat221, C222, D222, E222, F222, G222, A222, B-flat222, C223, D223, E223, F223, G223, A223, B-flat223, C224, D224, E224, F224, G224, A224, B-flat224, C225, D225, E225, F225, G225, A225, B-flat225, C226, D226, E226, F226, G226, A226, B-flat226, C227, D227, E227, F227, G227, A227, B-flat227, C228, D228, E228, F228, G228, A228, B-flat228, C229, D229, E229, F229, G229, A229, B-flat229, C230, D230, E230, F230, G230, A230, B-flat230, C231, D231, E231, F231, G231, A231, B-flat231, C232, D232, E232, F232, G232, A232, B-flat232, C233, D233, E233, F233, G233, A233, B-flat233, C234, D234, E234, F234, G234, A234, B-flat234, C235, D235, E235, F235, G235, A235, B-flat235, C236, D236, E236, F236, G236, A236, B-flat236, C237, D237, E237, F237, G237, A237, B-flat237, C238, D238, E238, F238, G238, A238, B-flat238, C239, D239, E239, F239, G239, A239, B-flat239, C240, D240, E240, F240, G240, A240, B-flat240, C241, D241, E241, F241, G241, A241, B-flat241, C242, D242, E242, F242, G242, A242, B-flat242, C243, D243, E243, F243, G243, A243, B-flat243, C244, D244, E244, F244, G244, A244, B-flat244, C245, D245, E245, F245, G245, A245, B-flat245, C246, D246, E246, F246, G246, A246, B-flat246, C247, D247, E247, F247, G247, A247, B-flat247, C248, D248, E248, F248, G248, A248, B-flat248, C249, D249, E249, F249, G249, A249, B-flat249, C250, D250, E250, F250, G250, A250, B-flat250, C251, D251, E251, F251, G251, A251, B-flat251, C252, D252, E252, F252, G252, A252, B-flat252, C253, D253, E253, F253, G253, A253, B-flat253, C254, D254, E254, F254, G254, A254, B-flat254, C255, D255, E255, F255, G255, A255, B-flat255, C256, D256, E256, F256, G256, A256, B-flat256, C257, D257, E257, F257, G257, A257, B-flat257, C258, D258, E258, F258, G258, A258, B-flat258, C259, D259, E259, F259, G259, A259, B-flat259, C260, D260, E260, F260, G260, A260, B-flat260, C261, D261, E261, F261, G261, A261, B-flat261, C262, D262, E262, F262, G262, A262, B-flat262, C263, D263, E263, F263, G263, A263, B-flat263, C264, D264, E264, F264, G264, A264, B-flat264, C265, D265, E265, F265, G265, A265, B-flat265, C266, D266, E266, F266, G266, A266, B-flat266, C267, D267, E267, F267, G267, A267, B-flat267, C268, D268, E268, F268, G268, A268, B-flat268, C269, D269, E269, F269, G269, A269, B-flat269, C270, D270, E270, F270, G270, A270, B-flat270, C271, D271, E271, F271, G271, A271, B-flat271, C272, D272, E272, F272, G272, A272, B-flat272, C273, D273, E273, F273, G273, A273, B-flat273, C274, D274, E274, F274, G274, A274, B-flat274, C275, D275, E275, F275, G275, A275, B-flat275, C276, D276, E276, F276, G276, A276, B-flat276, C277, D277, E277, F277, G277, A277, B-flat277, C278, D278, E278, F278, G278, A278, B-flat278, C279, D279, E279, F279, G279, A279, B-flat279, C280, D280, E280, F280, G280, A280, B-flat280, C281, D281, E281, F281, G281, A281, B-flat281, C282, D282, E282, F282, G282, A282, B-flat282, C283, D283, E283, F283, G283, A283, B-flat283, C284, D284, E284, F284, G284, A284, B-flat284, C285, D285, E285, F285, G285, A285, B-flat285, C286, D286, E286, F286, G286, A286, B-flat286, C287, D287, E287, F287, G287, A287, B-flat287, C288, D288, E288, F288, G288, A288, B-flat288, C289, D289, E289, F289, G289, A289, B-flat289, C290, D290, E290, F290, G290, A290, B-flat290, C291, D291, E291, F291, G291, A291, B-flat291, C292, D292, E292, F292, G292, A292, B-flat292, C293, D293, E293, F293, G293, A293, B-flat293, C294, D294, E294, F294, G294, A294, B-flat294, C295, D295, E295, F295, G295, A295, B-flat295, C296, D296, E296, F296, G296, A296, B-flat296, C297, D297, E297, F297, G297, A297, B-flat297, C298, D298, E298, F298, G298, A298, B-flat298, C299, D299, E299, F299, G299, A299, B-flat299, C300, D300, E300, F300, G300, A300, B-flat300, C301, D301, E301, F301, G301, A301, B-flat301, C302, D302, E302, F302, G302, A302, B-flat302, C303, D303, E303, F303, G303, A303, B-flat303, C304, D304, E304, F304, G304, A304, B-flat304, C305, D305, E305, F305, G305, A305, B-flat305, C306, D306, E306, F306, G306, A306, B-flat306, C307, D307, E307, F307, G307, A307, B-flat307, C308, D308, E308, F308, G308, A308, B-flat308, C309, D309, E309, F309, G309, A309, B-flat309, C310, D310, E310, F310, G310, A310, B-flat310, C311, D311, E311, F311, G311, A311, B-flat311, C312, D312, E312, F312, G312, A312, B-flat312, C313, D313, E313, F313, G313, A313, B-flat313, C314, D314, E314, F314, G314, A314, B-flat314, C315, D315, E315, F315, G315, A315, B-flat315, C316, D316, E316, F316, G316, A316, B-flat316, C317, D317, E317, F317, G317, A317, B-flat317, C318, D318, E318, F318, G318, A318, B-flat318, C319, D319, E319, F319, G319, A319, B-flat319, C320, D320, E320, F320, G320, A320, B-flat320, C321, D321, E321, F321, G321, A321, B-flat321, C322, D322, E322, F322, G322, A322, B-flat322, C323, D323, E323, F323, G323, A323, B-flat323, C324, D324, E324, F324, G324, A324, B-flat324, C325, D325, E325, F325, G325, A325, B-flat325, C326, D326, E326, F326, G326, A326, B-flat326, C327, D327, E327, F327, G327, A327, B-flat327, C328, D328, E328, F328, G328, A328, B-flat328, C329, D329, E329, F329, G329, A329, B-flat329, C330, D330, E330, F330, G330, A330, B-flat330, C331, D331, E331, F331, G331, A331, B-flat331, C332, D332, E332, F332, G332, A332, B-flat332, C333, D333, E333, F333, G333, A333, B-flat333, C334, D334, E334, F334, G334, A334, B-flat334, C335, D335, E335, F335, G335, A335, B-flat335, C336, D336, E336, F336, G336, A336, B-flat336, C337, D337, E337, F337, G337, A337, B-flat337, C338, D338, E338, F338, G338, A338, B-flat338, C339, D339, E339, F339, G339, A339, B-flat339, C340, D340, E340, F340, G340, A340, B-flat340, C341, D341, E341, F341, G341, A341, B-flat341, C342, D342, E342, F342, G342, A342, B-flat342, C343, D343, E343, F343, G343, A343, B-flat343, C344, D344, E344, F344, G344, A344, B-flat344, C345, D345, E345, F345, G345, A345, B-flat345, C346, D346, E346, F346, G346, A346, B-flat346, C347, D347, E347, F347, G347, A347, B-flat347, C348, D348, E348, F348, G348, A348, B-flat348, C349, D349, E349, F349, G349, A349, B-flat349, C350, D350, E350, F350, G350, A350, B-flat350, C351, D351, E351, F351, G351, A351, B-flat351, C352, D352, E352, F352, G352, A352, B-flat352, C353, D353, E353, F353, G353, A353, B-flat353, C354, D354, E354, F354, G354, A354, B-flat354, C355, D355, E355, F355, G355, A355, B-flat355, C356, D356, E356, F356, G356, A356, B-flat356, C357, D357, E357, F357, G357, A357, B-flat357, C358, D358, E358, F358, G358, A358, B-flat358, C359, D359, E359, F359, G359, A359, B-flat359, C360, D360, E360, F360, G360, A360, B-flat360, C361, D361, E361, F361, G361, A361, B-flat361, C362, D362, E362, F362, G362,



⑤

Exercise 5, measures 1-2. The first staff is in treble clef, key of D major (two sharps), and 4/4 time. It contains two measures of music. The second staff is in treble clef, key of D major, and 4/4 time, containing two measures of music. The exercise concludes with a double bar line.

⑥

Exercise 6, measures 1-2. The first staff is in treble clef, key of B minor (two flats), and 4/4 time. It contains two measures of music. The second staff is in treble clef, key of B minor, and 4/4 time, containing two measures of music. The exercise concludes with a double bar line.

⑦

Exercise 7, measures 1-2. The first staff is in treble clef, key of F# major (three sharps), and 4/4 time. It contains two measures of music. The second staff is in treble clef, key of F# major, and 4/4 time, containing two measures of music. The exercise concludes with a double bar line.

⑧

Exercise 8, measures 1-2. The first staff is in treble clef, key of D major (two sharps), and 4/4 time. It contains two measures of music. The second staff is in treble clef, key of D major, and 4/4 time, containing two measures of music. The exercise concludes with a double bar line.

⑨

Exercise 9, measures 1-2. The first staff is in treble clef, key of B minor (two flats), and 4/4 time. It contains two measures of music. The second staff is in treble clef, key of B minor, and 4/4 time, containing two measures of music. The exercise concludes with a double bar line.

10

Exercise 10: Two staves of music in G major (one sharp) and 4/4 time. The first staff contains four measures of eighth-note patterns, and the second staff contains four measures of eighth-note patterns, ending with a double bar line.

11

Exercise 11: Two staves of music in B-flat major (two flats) and 4/4 time. The first staff contains four measures of eighth-note patterns, and the second staff contains four measures of eighth-note patterns, ending with a double bar line.

12

Exercise 12: Two staves of music in D major (two sharps) and 4/4 time. The first staff contains four measures of eighth-note patterns, and the second staff contains four measures of eighth-note patterns, ending with a double bar line.

13

Exercise 13: Two staves of music in E major (three sharps) and 4/4 time. The first staff contains four measures of eighth-note patterns, and the second staff contains four measures of eighth-note patterns, ending with a double bar line.

14

Exercise 14: Two staves of music in F major (one flat) and 4/4 time. The first staff contains four measures of eighth-note patterns, and the second staff contains four measures of eighth-note patterns, ending with a double bar line.

15

Exercise 15 consists of two staves of music in 4/4 time. The key signature has two flats (B-flat and E-flat). The melody is a continuous eighth-note line: G4, A4, Bb4, C5, D5, E5, F5, G5, A5, Bb5, C6, D6, E6, F6, G6, A6, Bb6, C7, D7, E7, F7, G7, A7, Bb7, C8, D8, E8, F8, G8, A8, Bb8, C9, D9, E9, F9, G9, A9, Bb9, C10, D10, E10, F10, G10, A10, Bb10, C11, D11, E11, F11, G11, A11, Bb11, C12, D12, E12, F12, G12, A12, Bb12, C13, D13, E13, F13, G13, A13, Bb13, C14, D14, E14, F14, G14, A14, Bb14, C15, D15, E15, F15, G15, A15, Bb15, C16, D16, E16, F16, G16, A16, Bb16, C17, D17, E17, F17, G17, A17, Bb17, C18, D18, E18, F18, G18, A18, Bb18, C19, D19, E19, F19, G19, A19, Bb19, C20, D20, E20, F20, G20, A20, Bb20, C21, D21, E21, F21, G21, A21, Bb21, C22, D22, E22, F22, G22, A22, Bb22, C23, D23, E23, F23, G23, A23, Bb23, C24, D24, E24, F24, G24, A24, Bb24, C25, D25, E25, F25, G25, A25, Bb25, C26, D26, E26, F26, G26, A26, Bb26, C27, D27, E27, F27, G27, A27, Bb27, C28, D28, E28, F28, G28, A28, Bb28, C29, D29, E29, F29, G29, A29, Bb29, C30, D30, E30, F30, G30, A30, Bb30, C31, D31, E31, F31, G31, A31, Bb31, C32, D32, E32, F32, G32, A32, Bb32, C33, D33, E33, F33, G33, A33, Bb33, C34, D34, E34, F34, G34, A34, Bb34, C35, D35, E35, F35, G35, A35, Bb35, C36, D36, E36, F36, G36, A36, Bb36, C37, D37, E37, F37, G37, A37, Bb37, C38, D38, E38, F38, G38, A38, Bb38, C39, D39, E39, F39, G39, A39, Bb39, C40, D40, E40, F40, G40, A40, Bb40, C41, D41, E41, F41, G41, A41, Bb41, C42, D42, E42, F42, G42, A42, Bb42, C43, D43, E43, F43, G43, A43, Bb43, C44, D44, E44, F44, G44, A44, Bb44, C45, D45, E45, F45, G45, A45, Bb45, C46, D46, E46, F46, G46, A46, Bb46, C47, D47, E47, F47, G47, A47, Bb47, C48, D48, E48, F48, G48, A48, Bb48, C49, D49, E49, F49, G49, A49, Bb49, C50, D50, E50, F50, G50, A50, Bb50, C51, D51, E51, F51, G51, A51, Bb51, C52, D52, E52, F52, G52, A52, Bb52, C53, D53, E53, F53, G53, A53, Bb53, C54, D54, E54, F54, G54, A54, Bb54, C55, D55, E55, F55, G55, A55, Bb55, C56, D56, E56, F56, G56, A56, Bb56, C57, D57, E57, F57, G57, A57, Bb57, C58, D58, E58, F58, G58, A58, Bb58, C59, D59, E59, F59, G59, A59, Bb59, C60, D60, E60, F60, G60, A60, Bb60, C61, D61, E61, F61, G61, A61, Bb61, C62, D62, E62, F62, G62, A62, Bb62, C63, D63, E63, F63, G63, A63, Bb63, C64, D64, E64, F64, G64, A64, Bb64, C65, D65, E65, F65, G65, A65, Bb65, C66, D66, E66, F66, G66, A66, Bb66, C67, D67, E67, F67, G67, A67, Bb67, C68, D68, E68, F68, G68, A68, Bb68, C69, D69, E69, F69, G69, A69, Bb69, C70, D70, E70, F70, G70, A70, Bb70, C71, D71, E71, F71, G71, A71, Bb71, C72, D72, E72, F72, G72, A72, Bb72, C73, D73, E73, F73, G73, A73, Bb73, C74, D74, E74, F74, G74, A74, Bb74, C75, D75, E75, F75, G75, A75, Bb75, C76, D76, E76, F76, G76, A76, Bb76, C77, D77, E77, F77, G77, A77, Bb77, C78, D78, E78, F78, G78, A78, Bb78, C79, D79, E79, F79, G79, A79, Bb79, C80, D80, E80, F80, G80, A80, Bb80, C81, D81, E81, F81, G81, A81, Bb81, C82, D82, E82, F82, G82, A82, Bb82, C83, D83, E83, F83, G83, A83, Bb83, C84, D84, E84, F84, G84, A84, Bb84, C85, D85, E85, F85, G85, A85, Bb85, C86, D86, E86, F86, G86, A86, Bb86, C87, D87, E87, F87, G87, A87, Bb87, C88, D88, E88, F88, G88, A88, Bb88, C89, D89, E89, F89, G89, A89, Bb89, C90, D90, E90, F90, G90, A90, Bb90, C91, D91, E91, F91, G91, A91, Bb91, C92, D92, E92, F92, G92, A92, Bb92, C93, D93, E93, F93, G93, A93, Bb93, C94, D94, E94, F94, G94, A94, Bb94, C95, D95, E95, F95, G95, A95, Bb95, C96, D96, E96, F96, G96, A96, Bb96, C97, D97, E97, F97, G97, A97, Bb97, C98, D98, E98, F98, G98, A98, Bb98, C99, D99, E99, F99, G99, A99, Bb99, C100, D100, E100, F100, G100, A100, Bb100, C101, D101, E101, F101, G101, A101, Bb101, C102, D102, E102, F102, G102, A102, Bb102, C103, D103, E103, F103, G103, A103, Bb103, C104, D104, E104, F104, G104, A104, Bb104, C105, D105, E105, F105, G105, A105, Bb105, C106, D106, E106, F106, G106, A106, Bb106, C107, D107, E107, F107, G107, A107, Bb107, C108, D108, E108, F108, G108, A108, Bb108, C109, D109, E109, F109, G109, A109, Bb109, C110, D110, E110, F110, G110, A110, Bb110, C111, D111, E111, F111, G111, A111, Bb111, C112, D112, E112, F112, G112, A112, Bb112, C113, D113, E113, F113, G113, A113, Bb113, C114, D114, E114, F114, G114, A114, Bb114, C115, D115, E115, F115, G115, A115, Bb115, C116, D116, E116, F116, G116, A116, Bb116, C117, D117, E117, F117, G117, A117, Bb117, C118, D118, E118, F118, G118, A118, Bb118, C119, D119, E119, F119, G119, A119, Bb119, C120, D120, E120, F120, G120, A120, Bb120, C121, D121, E121, F121, G121, A121, Bb121, C122, D122, E122, F122, G122, A122, Bb122, C123, D123, E123, F123, G123, A123, Bb123, C124, D124, E124, F124, G124, A124, Bb124, C125, D125, E125, F125, G125, A125, Bb125, C126, D126, E126, F126, G126, A126, Bb126, C127, D127, E127, F127, G127, A127, Bb127, C128, D128, E128, F128, G128, A128, Bb128, C129, D129, E129, F129, G129, A129, Bb129, C130, D130, E130, F130, G130, A130, Bb130, C131, D131, E131, F131, G131, A131, Bb131, C132, D132, E132, F132, G132, A132, Bb132, C133, D133, E133, F133, G133, A133, Bb133, C134, D134, E134, F134, G134, A134, Bb134, C135, D135, E135, F135, G135, A135, Bb135, C136, D136, E136, F136, G136, A136, Bb136, C137, D137, E137, F137, G137, A137, Bb137, C138, D138, E138, F138, G138, A138, Bb138, C139, D139, E139, F139, G139, A139, Bb139, C140, D140, E140, F140, G140, A140, Bb140, C141, D141, E141, F141, G141, A141, Bb141, C142, D142, E142, F142, G142, A142, Bb142, C143, D143, E143, F143, G143, A143, Bb143, C144, D144, E144, F144, G144, A144, Bb144, C145, D145, E145, F145, G145, A145, Bb145, C146, D146, E146, F146, G146, A146, Bb146, C147, D147, E147, F147, G147, A147, Bb147, C148, D148, E148, F148, G148, A148, Bb148, C149, D149, E149, F149, G149, A149, Bb149, C150, D150, E150, F150, G150, A150, Bb150, C151, D151, E151, F151, G151, A151, Bb151, C152, D152, E152, F152, G152, A152, Bb152, C153, D153, E153, F153, G153, A153, Bb153, C154, D154, E154, F154, G154, A154, Bb154, C155, D155, E155, F155, G155, A155, Bb155, C156, D156, E156, F156, G156, A156, Bb156, C157, D157, E157, F157, G157, A157, Bb157, C158, D158, E158, F158, G158, A158, Bb158, C159, D159, E159, F159, G159, A159, Bb159, C160, D160, E160, F160, G160, A160, Bb160, C161, D161, E161, F161, G161, A161, Bb161, C162, D162, E162, F162, G162, A162, Bb162, C163, D163, E163, F163, G163, A163, Bb163, C164, D164, E164, F164, G164, A164, Bb164, C165, D165, E165, F165, G165, A165, Bb165, C166, D166, E166, F166, G166, A166, Bb166, C167, D167, E167, F167, G167, A167, Bb167, C168, D168, E168, F168, G168, A168, Bb168, C169, D169, E169, F169, G169, A169, Bb169, C170, D170, E170, F170, G170, A170, Bb170, C171, D171, E171, F171, G171, A171, Bb171, C172, D172, E172, F172, G172, A172, Bb172, C173, D173, E173, F173, G173, A173, Bb173, C174, D174, E174, F174, G174, A174, Bb174, C175, D175, E175, F175, G175, A175, Bb175, C176, D176, E176, F176, G176, A176, Bb176, C177, D177, E177, F177, G177, A177, Bb177, C178, D178, E178, F178, G178, A178, Bb178, C179, D179, E179, F179, G179, A179, Bb179, C180, D180, E180, F180, G180, A180, Bb180, C181, D181, E181, F181, G181, A181, Bb181, C182, D182, E182, F182, G182, A182, Bb182, C183, D183, E183, F183, G183, A183, Bb183, C184, D184, E184, F184, G184, A184, Bb184, C185, D185, E185, F185, G185, A185, Bb185, C186, D186, E186, F186, G186, A186, Bb186, C187, D187, E187, F187, G187, A187, Bb187, C188, D188, E188, F188, G188, A188, Bb188, C189, D189, E189, F189, G189, A189, Bb189, C190, D190, E190, F190, G190, A190, Bb190, C191, D191, E191, F191, G191, A191, Bb191, C192, D192, E192, F192, G192, A192, Bb192, C193, D193, E193, F193, G193, A193, Bb193, C194, D194, E194, F194, G194, A194, Bb194, C195, D195, E195, F195, G195, A195, Bb195, C196, D196, E196, F196, G196, A196, Bb196, C197, D197, E197, F197, G197, A197, Bb197, C198, D198, E198, F198, G198, A198, Bb198, C199, D199, E199, F199, G199, A199, Bb199, C200, D200, E200, F200, G200, A200, Bb200, C201, D201, E201, F201, G201, A201, Bb201, C202, D202, E202, F202, G202, A202, Bb202, C203, D203, E203, F203, G203, A203, Bb203, C204, D204, E204, F204, G204, A204, Bb204, C205, D205, E205, F205, G205, A205, Bb205, C206, D206, E206, F206, G206, A206, Bb206, C207, D207, E207, F207, G207, A207, Bb207, C208, D208, E208, F208, G208, A208, Bb208, C209, D209, E209, F209, G209, A209, Bb209, C210, D210, E210, F210, G210, A210, Bb210, C211, D211, E211, F211, G211, A211, Bb211, C212, D212, E212, F212, G212, A212, Bb212, C213, D213, E213, F213, G213, A213, Bb213, C214, D214, E214, F214, G214, A214, Bb214, C215, D215, E215, F215, G215, A215, Bb215, C216, D216, E216, F216, G216, A216, Bb216, C217, D217, E217, F217, G217, A217, Bb217, C218, D218, E218, F218, G218, A218, Bb218, C219, D219, E219, F219, G219, A219, Bb219, C220, D220, E220, F220, G220, A220, Bb220, C221, D221, E221, F221, G221, A221, Bb221, C222, D222, E222, F222, G222, A222, Bb222, C223, D223, E223, F223, G223, A223, Bb223, C224, D224, E224, F224, G224, A224, Bb224, C225, D225, E225, F225, G225, A225, Bb225, C226, D226, E226, F226, G226, A226, Bb226, C227, D227, E227, F227, G227, A227, Bb227, C228, D228, E228, F228, G228, A228, Bb228, C229, D229, E229, F229, G229, A229, Bb229, C230, D230, E230, F230, G230, A230, Bb230, C231, D231, E231, F231, G231, A231, Bb231, C232, D232, E232, F232, G232, A232, Bb232, C233, D233, E233, F233, G233, A233, Bb233, C234, D234, E234, F234, G234, A234, Bb234, C235, D235, E235, F235, G235, A235, Bb235, C236, D236, E236, F236, G236, A236, Bb236, C237, D237, E237, F237, G237, A237, Bb237, C238, D238, E238, F238, G238, A238, Bb238, C239, D239, E239, F239, G239, A239, Bb239, C240, D240, E240, F240, G240, A240, Bb240, C241, D241, E241, F241, G241, A241, Bb241, C242, D242, E242, F242, G242, A242, Bb242, C243, D243, E243, F243, G243, A243, Bb243, C244, D244, E244, F244, G244, A244, Bb244, C245, D245, E245, F245, G245, A245, Bb245, C246, D246, E246, F246, G246, A246, Bb246, C247, D247, E247, F247, G247, A247, Bb247, C248, D248, E248, F248, G248, A248, Bb248, C249, D249, E249, F249, G249, A249, Bb249, C250, D250, E250, F250, G250, A250, Bb250, C251, D251, E251, F251, G251, A251, Bb251, C252, D252, E252, F252, G252, A252, Bb252, C253, D253, E253, F253, G253, A253, Bb253, C254, D254, E254, F254, G254, A254, Bb254, C255, D255, E255, F255, G255, A255, Bb255, C256, D256, E256, F256, G256, A256, Bb256, C257, D257, E257, F257, G257, A257, Bb257, C258, D258, E258, F258, G258, A258, Bb258, C259, D259, E259, F259, G259, A259, Bb259, C260, D260, E260, F260, G260, A260, Bb260, C261, D261, E261, F261, G261, A261, Bb261, C262, D262, E262, F262, G262, A262, Bb262, C263, D263, E263, F263, G263, A263, Bb263, C264, D264, E264, F264, G264, A264, Bb264, C265, D265, E265, F265, G265, A265, Bb265, C266, D266, E266, F266, G266, A266, Bb266, C267, D267, E267, F267, G267, A267, Bb267, C268, D268, E268, F268, G268, A268, Bb268, C269, D269, E269, F269, G269, A269, Bb269, C270, D270, E270, F270, G270, A270, Bb270, C271, D271, E271, F271, G271, A271, Bb271, C272, D272, E272, F272, G272, A272, Bb272, C273, D273, E273, F273, G273, A273, Bb273, C274, D274, E274, F274, G274, A274, Bb274, C275, D275, E275, F275, G275, A275, Bb275, C276, D276, E276, F276, G276, A276, Bb276, C277, D277, E277, F277, G277, A277, Bb277, C278, D278, E278, F278, G278, A278, Bb278, C279, D279, E279, F279, G279, A279, Bb279, C280, D280, E280, F280, G280, A280, Bb280, C281, D281, E281, F281, G281, A281, Bb281, C282, D282, E282, F282, G282, A282, Bb282, C283, D283, E283, F283, G283, A283, Bb283, C284, D284, E284, F284, G284, A284, Bb284, C285, D285, E285, F285, G285, A285, Bb285, C286, D286, E286, F286, G286, A286, Bb286, C287, D287, E287, F287, G287, A287, Bb287, C288, D288, E288, F288, G288, A288, Bb288, C289, D289, E289, F289, G289, A289, Bb289, C290, D290, E290, F290, G290, A290, Bb290, C291, D291, E291, F291, G291, A291, Bb291, C292, D292, E292, F292, G292, A292, Bb292, C293, D293, E293, F293, G293, A293, Bb293, C294, D294, E294, F294, G294, A294, Bb294, C295, D295, E295, F295, G295, A295, Bb295, C296, D296, E296, F296, G296, A296, Bb296, C297, D297, E297, F297, G297, A297, Bb297, C298, D298, E298, F298, G298, A298, Bb298, C299, D299, E299, F299, G299, A299, Bb299, C300, D300, E300, F300, G300, A300, Bb300, C301, D301, E301, F301, G301, A301, Bb301, C302, D302, E302, F302, G302, A302, Bb302, C303, D303, E303, F303, G303, A303, Bb303, C304, D304, E304, F304, G304, A304, Bb304, C305, D305, E305, F305, G305, A305, Bb305, C306, D306, E306, F306, G306, A306, Bb306, C307, D307, E307, F307, G307, A307, Bb307, C308, D308, E308, F308, G308, A308, Bb308, C309, D309, E309, F309, G309, A309, Bb309, C310, D310, E310, F310, G310, A310, Bb310, C311, D311, E311, F311, G311, A311, Bb311, C312, D312, E312, F312, G312, A312, Bb312, C313, D313, E313, F313, G313, A313, Bb313, C314, D314, E314, F314, G314, A314, Bb314, C315, D315, E315, F315, G315, A315, Bb315, C316, D316, E316, F316, G316, A316, Bb316, C317, D317, E317, F317, G317, A317, Bb317, C318, D318, E318, F318, G318, A318, Bb318, C319, D319, E319, F319, G319, A319, Bb319, C320, D320, E320, F320, G320, A320, Bb320, C321, D321, E321, F321, G321, A321, Bb321, C322, D322, E322, F322, G322, A322, Bb322, C323, D323, E323, F323, G323, A323, Bb323, C324, D324, E324, F324, G324, A324, Bb324, C325, D325, E325, F325, G325, A325, Bb325, C326, D326, E326, F326, G326, A326, Bb326, C327, D327, E327, F327, G327, A327, Bb327, C328, D328, E328, F328, G328, A328, Bb328, C329, D329, E329, F329, G329, A329, Bb329, C330, D330, E330, F330, G330, A330, Bb330, C331, D331, E331, F331, G331, A331, Bb331, C332, D332, E332, F332, G332, A332, Bb332, C333, D333, E333, F333, G333, A333, Bb333, C334, D334, E334, F334, G334, A334, Bb334, C335, D335, E335, F335, G335, A335, Bb335, C336, D336, E336, F336, G336, A336, Bb336, C337, D337, E337, F337, G337, A337, Bb337, C338, D338, E338, F338, G338, A338, Bb338, C339, D339, E339, F339, G339, A339, Bb339, C340, D340, E340, F340, G340, A340, Bb340, C341, D341, E341, F341, G341, A341, Bb341, C342, D342, E342, F342, G342, A342, Bb342, C343, D343, E343, F343, G343, A343, Bb343, C344, D344, E344, F344, G344, A344, Bb344, C345, D345, E345, F345, G345, A345, Bb345, C346, D346, E346, F346, G346, A346, Bb346, C347, D347, E347, F347, G347, A347, Bb347, C348, D348, E348, F348, G348, A348, Bb348, C349, D349, E349, F349, G349, A349, Bb349, C350, D350, E350, F350, G350, A350, Bb350, C351, D351, E351, F351, G351, A351, Bb351, C352, D352, E352, F352, G352, A352, Bb352, C353, D353, E353, F353, G353, A353, Bb353, C354, D354, E354, F354, G354, A354, Bb354, C355, D355, E355, F355, G355, A355, Bb355, C356, D356, E356, F356, G356, A356, Bb356, C357, D357, E357, F357, G357, A357, Bb357, C358, D358, E358, F358, G358, A358, Bb358, C359, D359, E359, F359, G359, A359, Bb359, C360, D360, E360, F360, G360, A360, Bb360, C361, D361, E361, F361, G361, A361, Bb361, C362, D362, E362, F362, G362, A362, Bb362, C363, D





⑤



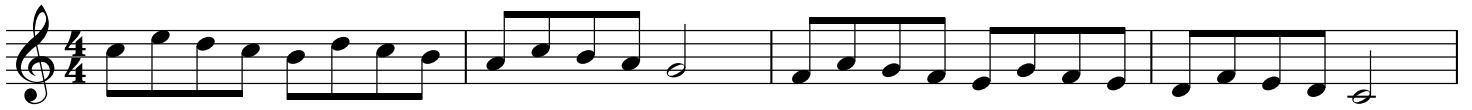
⑥



⑦



⑧



⑨



10

Exercise 10: Two staves of music in G major (one sharp) and 4/4 time. The first staff contains four measures of music, and the second staff contains four measures, ending with a double bar line.

11

Exercise 11: Two staves of music in B-flat major (two flats) and 4/4 time. The first staff contains four measures of music, and the second staff contains four measures, ending with a double bar line.

12

Exercise 12: Two staves of music in D major (two sharps) and 4/4 time. The first staff contains four measures of music, and the second staff contains four measures, ending with a double bar line.

13

Exercise 13: Two staves of music in E-flat major (three flats) and 4/4 time. The first staff contains four measures of music, and the second staff contains four measures, ending with a double bar line.

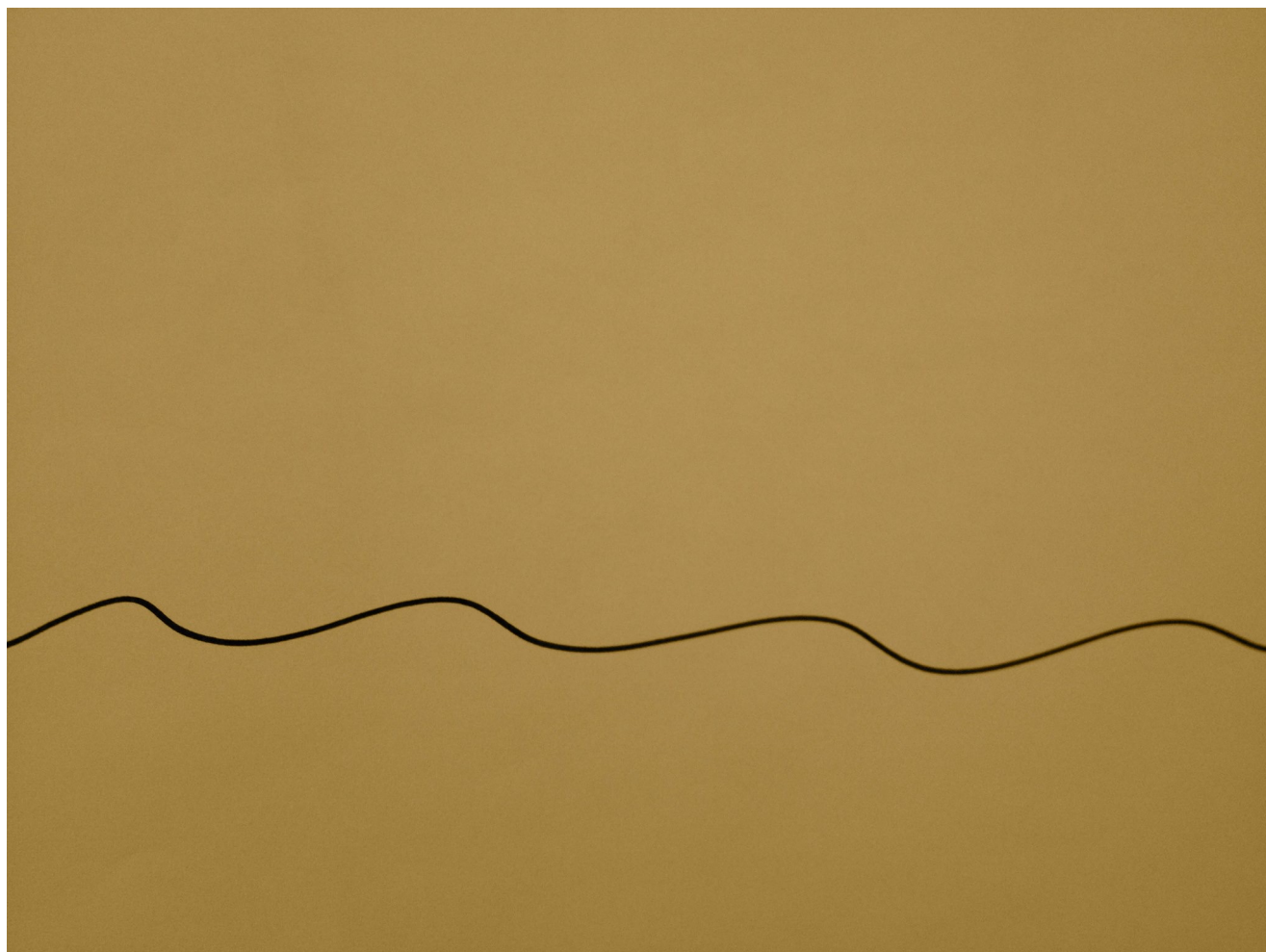
14

Exercise 14: Two staves of music in F major (no sharps or flats) and 4/4 time. The first staff contains four measures of music, and the second staff contains four measures, ending with a double bar line.





# TRUMPET DIATONICS



JC HEISLER